

# 2019 | DISCOVERY

CLASS A DIESEL



LASTING DEPENDABILITY | FAMILY FAVORITE | FEATURE PACKED

 **FLEETWOOD RV**

[www.fleetwoodrv.com](http://www.fleetwoodrv.com)



DISCOVERY 38N  
Shown in Rainier

## VENTURE INTO THE UNKNOWN

The 2019 Discovery is a Class A Diesel that will help you remember why it is you travel. With practical features like Aqua-Hot® heating, 15K-BTU roof A/Cs, a Magnadyne M-10 stereo with navigation and a 360HP Cummins engine, you can spend more time focusing on the destinations ahead. Plus, with the luxury amenities that come with 2019, like front zone tile floor heat, the exclusive Power Bridge™ chassis and chic cabinetry and hardware, you can put more focus on the moments between each pin on the map.

## YOU WANT EVERY SINGLE ADVANTAGE WHEN IT COMES TO YOUR RV.

At REV, we don't settle for anything less than the best, and neither should you. That's why every Fleetwood RV motorhome features industry-leading materials and construction. With these REV brands, you'll also find the ultimate in RV convenience and strength, like our auto hydraulic leveling system, Vacu-Bond™ construction, Dryseal™ edge coating, and much more – all coming standard to elevate your travels.

Each of these advantages have been engineered to deliver superior reliability, durability, and most of all, customer satisfaction.

### 1. Power Bridge™ (Diesel Motorhomes)

REV's Power Bridge chassis is exclusive and provides customers with superior handling; cavernous storage, enormous holding tank capacities and a better ride. With its modern-engineers all-steel structure, the Power Bridge creates a true side-to-side, front-to-rear and belly-to-beltline bridging platform that is custom designed for each Class A Diesel floorplan. This is a vast improvement over standard rail technology, and it's the perfect pairing with the Freightliner XCM chassis.

\*\*Construction modifications on Power Arrive

### 2. Auto Hydraulic Leveling System

More reliable than electric leveling jacks, our automatic hydraulic leveling system is reliable, durable and easy to use. The operating procedure is clean and easy, the results are smooth, simple leveling at the push of a button.

### 3. Powerlock System™ (Interlocking Floors, Walls, and Ceiling)

REV's interlocking aluminum extrusion wall-joint system integrates floor, sidewall, and roof assembly into one locked-together overall structure for long-term performance and durability.

### 4. Powerframe System™

(Precision-Welded Aluminum Walls, Floor, and Roof Structures)

Our wall, floor, and roof frames are designed and engineered to fit precisely with interlocking extrusions on the steel-reinforced bridge structure. No "hammer-it-to-fit" stick and frame construction here.

### 5. Vacu-Bond™ Construction

Vacuum-bonded assemblies combine industry-leading materials and construction for a straight and flat integrated wall that's better suited to the rigors of the road. It applies up to 415,000-pounds of vacuum pressure to our already strong welded-aluminum sidewall frame, bead-foam panel insulation, Tuff-Coat fiberglass skin, and inner wall materials for over 30 minutes – far exceeding industry standards.



#### Ceiling Interlock

You won't find stick and frame construction here. Our exclusive extruded aluminum allows the ceiling to "lock" with the wall structure, creating one solid aluminum assembly.

#### Floor Interlock

To give your RV's structure a precise, seamless fit, our extruded aluminum, an exclusive feature, "locks" the wall structure and floor together to create a solid aluminum shell that maximizes overall strength.

#### Five Layer Wall

Our Vacu-Bond™ walls feature an adhesive bonding process that applies up to 415,000-pounds of vacuum pressure to the welded-aluminum sidewall frame, bead-foam panel insulation, and Tuff-Coat fiberglass skin for more than 30 minutes – far exceeding industry standards.

#### Weld Joint

Every joint found in the frame of your Fleetwood motorhome has been welded by a certified welder to add strength to the frame, unlike the stick and nail construction found on other RVs.

### 6. Solid Bead-Foam Engineered Fit Insulation™

In some RVs, you may find air holes in the insulation. Not in a REV RV. Using exact measurements, bead-foam is placed between every structural support to eliminate any gaps and provide insulation from both exterior temperature and noise.

### 7. Dryseal™ Edge Coating

This water-wicking coating is applied to every edge of the walls and windows for long-lasting durability. It helps to seal out moisture, prevent delamination, swelling, and mold.

### 8. Tuff-Coat Fiberglass Walls

REV RV seeks to use the highest quality exterior fiberglass on our Class A gas and Class A diesel products. The impressive tuff-coat fiberglass skin is extremely weather resistant and UV resistant. Most importantly, there is no wood substrate on the exterior of the REV Class A products. Delamination is a major concern for manufacturers using the composite or wood backer in their walls. Not at REV RV, our exterior skin has no composite and no wood, just the fiberglass.

### 9. Tuff-Ply Engineered Vinyl Roofing

As the name implies, this "Tuff-Ply" or Thermoplastic Poly Olefin is as tough as it comes and is very low maintenance. Tuff-Ply is flexible, pliable and easily conforms with the roofline radius with little to no stress at the awning rail connection seam. Tuff-Ply is a clean, non-streaking, non-chalking engineered vinyl material that is easy to maintain.

### 10. Tuff-PEX™ Plumbing System

It's a complete system of flexible, yet durable, Oetiker tubing, fittings, and stainless-steel rings – all with sub-zero ratings. Colors of red for hot and blue for cold make servicing simple.

### 11. Tapered Slideout Box Tops

Our slideouts include a tapered roofline that directs water away from the RV to provide an additional level of moisture protection. There are also multiple bead-seals, as well as our debris awning protection.

### 12. Seamless Metallic Slide Room Underbelly

What's underneath is just as important as what's on top. Our metallic slide bottom goes above the standard wood bottom for protection against the elements, and adds yet another level of durability.

### 13. Roto-Cast Molded Luggage Bays

Instead of the industry-standard plywood, these molded bays are more durable, look great, and can be washed with a hose.

### 14. Dedicated Full-Length Metallic A/C Ducting

Instead of cut-out foam channels, REV provides insulated A/C ducting that runs the entire length of your motorhome with carefully placed outlets in the most occupied places to assure cool comfort.

### 15. Sure-Glide Flush Floor Aluminum Slide Transition Ramp

Pinewood ramps that absorb moisture, crack and rot are the industry standard. Not here! Our aluminum ramps will stay straight, extend and retract easily, and will provide you with years of trouble-free operation.

### 16. Automotive Inspired Bonded Windshield

REV RV's bonded windshields surpass the standard "floating" windshield in durability. The entire perimeter of glass is bonded to a frame that provides more support and is much more conducive to the demands of the road.

### 17. Bus-Style Cargo Doors

We far exceed the industry standards of exposed seals and hinges with a more durable design taken from our luxury motorcoaches.

### 18. Premium Full-Body Paint

Just like the cars, trucks, motorcycles and most any other automotive product produced today, our motorhomes receive the same premium painted protection on the exterior. Unlike the cars of today, our motorhomes are typically more than just one color. The REV RV family of painted motorhomes receive up to four different colors and as many as two separate coats of clear. Our REV RV family of Class A motorhomes are painted and clear coat protected in a state-of-the-art facility located right on the REV manufacturing campus. The results are easy to see...Better protection, better looks, and higher resale value after years of enjoyment.

### 19. Radiused and Cambered Entry Door

The industry standard square corner door allows for too much wind noise. So, we use a higher-end solution that fits your motorcoach's body better, latches more securely, and seals tighter.

### 20. Hide-A-Loft™ Overhead Bed System

A REV RV exclusive, our Hide-A-Loft™ Bed System offers a capacity of up to 500 lbs. The bed includes a queen mattress and is incredibly comfortable and easy to operate.

### 21. Dealer Partnership

REV's dealer relationship goes beyond the expected. We listen to our dealers and are able to provide you with a motorhome you can be proud to own and that fits your needs. This partnership allows the dealer to be a bridge between the customer and REV Group.

Build your own Discovery at  
<https://www.fleetwoodrv.com/build-your-own>



DISCOVERY 38N  
Shown in Luminous



Whatever type of adventure you seek, the Fleetwood Discovery provides that platform. This is a luxurious and innovative motorhome that has it all. Surround yourself with the comforts and luxuries of home.

3

4

DISCOVERY 38N  
Shown in Pinnacle

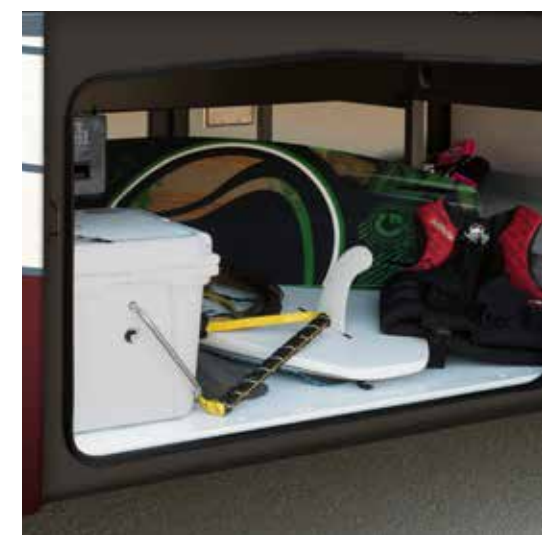
**FLEETWOOD RV**  
[www.fleetwoodrv.com](http://www.fleetwoodrv.com)



Shown in Savoy Tan decor  
with Nottingham Cherry cabinetry



Shown in Savoy Tan decor





RVing is a lifestyle choice. The thoughtfully designed Discovery delivers it all. A home away from home with every amenity to make life simple while seeking adventures and logging miles.

5

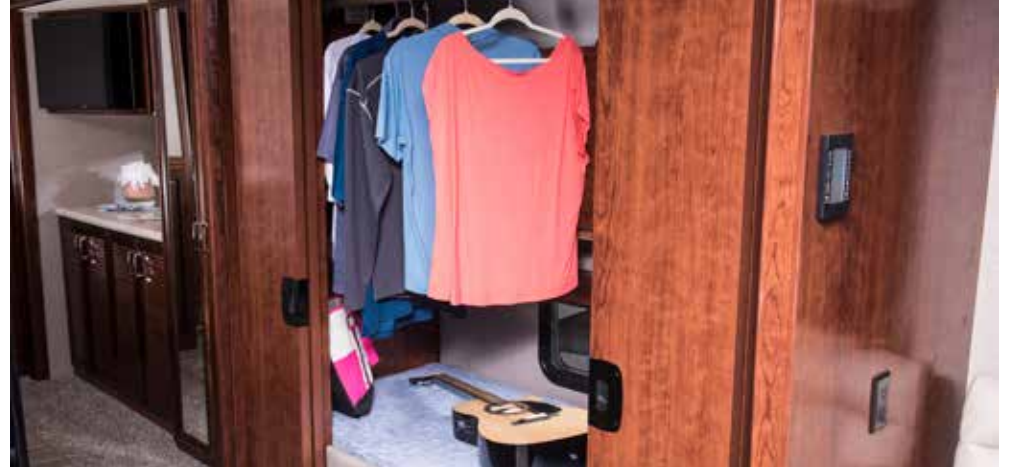
6

DISCOVERY 38N  
Shown in Celestial Grey decor  
with Nottingham Cherry cabinetry



7

DISCOVERY 38N  
Shown in Celestial Grey decor  
with Nottingham Cherry cabinetry



8





DISCOVERY 38N  
Shown in Celestial Grey decor  
with Nottingham Cherry cabinetry

Visit <https://www.fleetwoodrv.com/2019-discovery>  
to view more interior photos



### TOP SELLING FEATURES

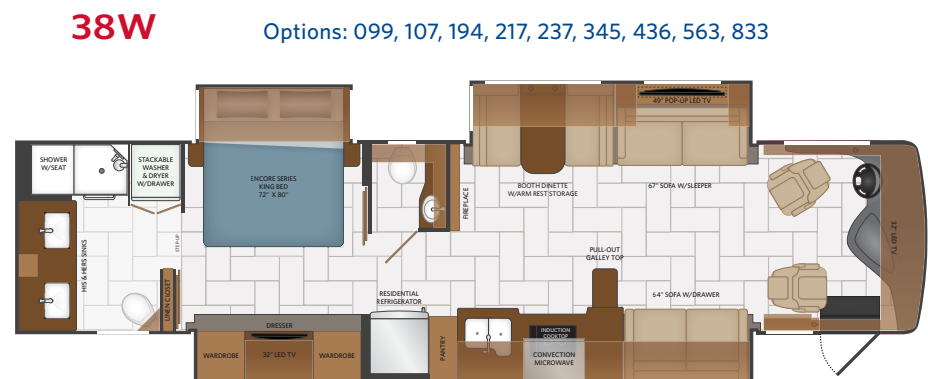
- 360HP Cummins® w/Allison 3000 Transmission
- Power Bridge chassis V-Ride rear suspension
- First diesel in it's class to offer Aqua-Hot® heating
- Front zone floor heat
- 12x24 hand-laid porcelain tile flooring
- 48" Exterior entertainment center
- Residential refrigerator w/2000W Pure Sine inverter
- Safe-T-View camera system
- Front generator slide
- 15,000 BTU roof A/C's (third roof A/C optional)
- Firefly house electronics command controls
- Fischer Paykal drawer style dishwasher optional
- Magnadyne M-10 10" touch screen-stereo w/navigation



AVAILABLE OPTIONS



FLOORPLANS



099	SATELLITE DELETE
107	DISHWASHER
194	THEATRE SEATING (38K, 38K, 38W)
203	SOFA BED w/AIR MATTRESS (38F)
217	HIDE-A-LOFT™ DROP DOWN QUEEN BED
237	THIRD ROOF A/C
345	49" MID-SHIP LED TV (38W)
436	CSA-FREIGHTLINER PACKAGE
563	TECHNOLOGY PACKAGE
809	L-SHAPED DINETTE (38N)
830	FACING DINETTE (38F)
833	FREE STANDING DINETTE w/CRENZEA (38K, 38K, 38W)

CHASSIS

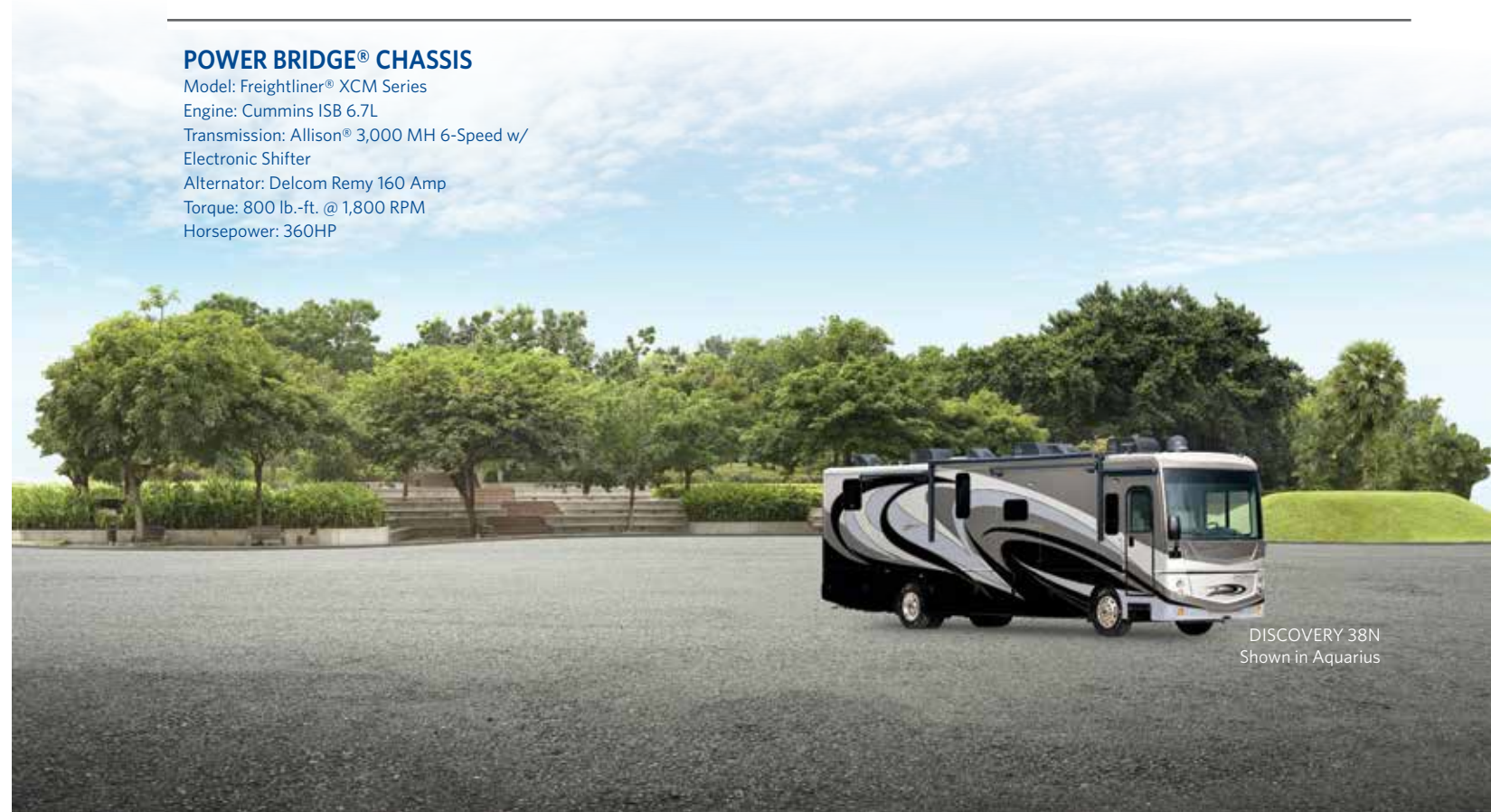
MODEL	38F	38K	38N	38W
Wheelbase (inches)	263"	252"	252"	263"
Front GAWR (lbs) <sup>2</sup>	12,400	12,400	12,400	12,400
Rear GAWR (lbs) <sup>3</sup>	21,000	21,000	21,000	21,000
GCWR (lbs) <sup>3</sup>	43,400	43,400	43,400	43,400
Hitch Rating Weight (lbs)*	10,000	500	10,000	10,000
Tongue Weight (lbs)	1,000	1,000	1,000	1,000
Fuel Capacity (gal)	100	100	100	100

DIMENSIONS AND CAPACITIES

MODEL	38F	38K	38N	38W
Overall Length (inches) <sup>4</sup>	40' 1"	38' 8"	38' 8"	40' 1"
Overall Height (with A/C)	12' 10"	12' 10"	12' 10"	12' 10"
Overall Width (maximum) <sup>5,6</sup>	102"	102"	102"	102"
Interior Height (maximum)	84"	84"	84"	84"
Interior Width (maximum)	96"	96"	96"	96"
Patio Awning Width (feet & inches)	19' 6"	10' 8"	18'	18'
Interior Storage (cu. ft.)	173	151	151	160
Exterior Storage (cu. ft.)	156	156	156	156
Fresh Water Holding Tank (gal)	100	100	100	100
Grey Water Holding Tank (gal)	75	75	75	75
Black Water Holding Tank (gal)	50	50	50	50
Aqua-Hot 400	S	S	S	S

POWER BRIDGE® CHASSIS

Model: Freightliner® XCM Series  
 Engine: Cummins ISB 6.7L  
 Transmission: Allison® 3,000 MH 6-Speed w/  
 Electronic Shifter  
 Alternator: Delcom Remy 160 Amp  
 Torque: 800 lb.-ft. @ 1,800 RPM  
 Horsepower: 360HP



DISCOVERY 38N  
Shown in Aquarius



EXTERIOR CHOICES

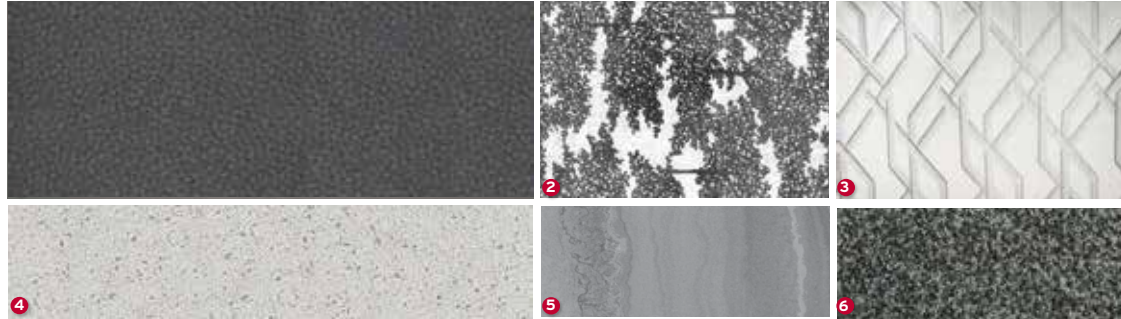


INTERIOR DECOR CHOICES

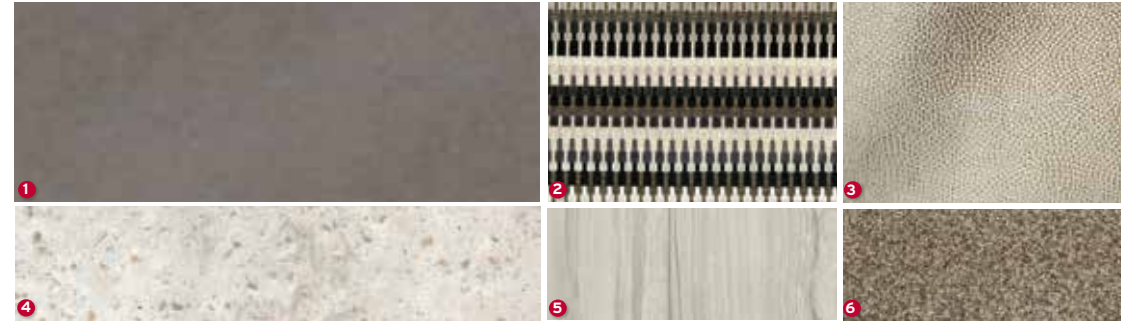
CELESTIAL GREY



RIDGELAND TAUPE



SAVOY TAN



- 1 SOFA
- 2 LIVING ACCENT
- 3 BEDSPREAD
- 4 COUNTERTOP
- 5 FLOORING
- 6 CARPET

DESIGNER RECOMMENDS THE FOLLOWING INTERIOR AND EXTERIOR COMBINATIONS

Celestial Grey Décor	+ Whispering Wind Cabinetry	+ Aquarius or Luminous Graphics
Ridgeland Taupe Décor	+ Cappuccino Cabinetry	+ Pinnacle or Rainer Graphics
Savoy Tan Décor	+ Nottingham Cherry Cabinetry	+ Aquarius or Rainer Graphics
Celestial Grey Décor	+ Nottingham Cherry Cabinetry	+ Pinnacle or Rainer Graphics

Product information, photography and illustrations included in this publication were as accurate as possible at the time of printing.

	38F	38K	38N	38W
Aluminum Bus-Style Side Swing Luggage Doors	S	S	S	S
Luggage Doors Handles	S	S	S	S
Basement Pass-Through Storage	S	S	S	S
Lighted Storage Compartments	S	S	S	S
Dual Fuel Fills	S	S	S	S
Door-Side 110V Patio Receptacle	S	S	S	S
Dual Glazed Frameless Flush Mount Windows	S	S	S	S
Seamless Beltline Trim	S	S	S	S
Tapered Slideout Box Tops & Debris Awnings	S	S	S	S
Tuff-Roof™ Low-Maintenance Roof System (TPO)	S	S	S	S
Easy-Slide Storage Tray	S	S	S	S
Patio Lights	S	S	S	S
Awning - Electric Patio & Entry Awnings w/LED lighting and Wind Sensor Retract	S	S	S	S
Slide Out Awning Toppers Above all Slideouts	S	S	S	S
Rear Ladder	S	S	S	S
Front/Rear Mudflaps	S	S	S	S
Four Point Fully Automatic Hydraulic Leveling Jacks	S	S	S	S
Fiberglass Wheel Well Trims	S	S	S	S
Acrylic Lighted Grab Handle at Entry Door	S	S	S	S
Exterior Lighted Power Entry Step	S	S	S	S
Front, Rear LED Clearance & Marker Lighting	S	S	S	S
Exterior Service Station - Includes: Water Pump Switch, Exterior shower, Black Tank Flush, City Water Hookup, Towel Holder & Drainage Valves	S	S	S	S
Gravity Water Fill	S	S	S	S
Exterior Park Cable & Satellite Hookup	S	S	S	S
TV Antenna HD	S	S	S	S
110 V Exterior Receptacle	S	S	S	S
Full Coverage Heavy Duty Undercoating	S	S	S	S
Power Roof Vents	S	S	S	S
King Satellite	S	S	S	S
Roof Vent Rain Covers	S	S	S	S
Exterior Slide-out Tray	S	S	S	S
Prep for Solar Panel	S	S	S	S
Under Chassis Lighting	S	S	S	S
Two-Piece Front Fiberglass Cap w/ Automotive Headlighting	S	S	S	S
One-Piece Rear Fiberglass Cap	S	S	S	S
Hood Insert & Seamless Mounting Access to Generator	S	S	S	S
One-Piece Windshield	S	S	S	S
Heated/Power Mirrors w/Integrated Side View Cameras	S	S	S	S
Daytime Running Lights	S	S	S	S
Tinted Frameless Slider Driver/Passenger Windows	S	S	S	S
Automotive Style Windshield Wiper System	S	S	S	S
Front Cap Protective Film	S	S	S	S
Generator Slide	S	S	S	S
12V & USB Accessory Ports	S	S	S	S
110V Power Outlet at Dash	S	S	S	S
Three-Point Seat Belts at Driver & Front Passenger Seats (w/Adjustable Shoulder Straps)	S	S	S	S
Air Suspension Dump Switch	S	S	S	S
Black Instrument Gauges w/Electronic Information Center	S	S	S	S
Automotive Wrap-Around Dash	S	S	S	S
Soft-Touch Automotive Dash	S	S	S	S
Auxiliary Start Circuit Switch	S	S	S	S
Cruise Control	S	S	S	S
High-Output Auto A/C Heater Combo	S	S	S	S
Driver/Passenger Front Power Roller Shade	S	S	S	S
Driver/Passenger Side Manual Roller Shades & Blinds	S	S	S	S
Driver Console Cupholders	S	S	S	S

EXTERIOR

CAB EXTERIOR

CAB INTERIOR

	38F	38K	38N	38W
Driver Chair-Ultra Leather w/Reclining Back, Swivel & Six-way Power Controls	S	S	S	S
Passenger Chair-Ultra Leather w/Reclining Back, Swivel Six-way Power Controls & Footrest	S	S	S	S
Easy-Access Battery Disconnect System	S	S	S	S
Intermittent Wiper Control	S	S	S	S
Tilt/Telescoping Steering Wheel	S	S	S	S
Satellite Radio Ready (Requires Subscription)	S	S	S	S
Touchscreen 10" Dash Stereo w/Bluetooth®, GPS Navigation & SiriusXM®	S	S	S	S
Back-Up Monitor w/Three Camera System	S	S	S	S
Driver Console w/Lower Storage Bin	S	S	S	S
Driver/Passenger Overhead Storage	S	S	S	S
Hide-A-Loft™ Drop Down Queen Bed	0	0	0	0
Emergency Engine Start Switch	S	S	S	S
Lighted Instrument Panel	S	S	S	S
12 V Disconnect Switch	S	S	S	S
Radio Switch Main/Auxiliary Power	S	S	S	S
Double Electric Entry Step	S	S	S	S
Power Entry Step Cover	S	S	S	S
Solid Surface Entry Step w/LED Lighting	S	S	S	S
Metal Interior Grab Handle at Entry	S	S	S	S
Entry Door Manual Roller Shades/Blinds	S	S	S	S
Entry Door w/Dead Bolt Lock	S	S	S	S
Sofa - Comfortfit 60" Sofa Rest Assured	N/A	N/A	S	N/A
Sofa - Comfortfit Villa 95"x70" L-Sofa w/Air Bed	S	N/A	N/A	N/A
Sofa - Comfortfit Villa 81"x70" L-Sofa w/Jack-knife	N/A	S	N/A	N/A
Sofa - Comfortfit Villa 67" Sofa w/Full Air Bed	N/A	N/A	N/A	S
Sofa - Comfortfit Villa 64" Sofa w/Drawer	N/A	N/A	N/A	S
Free Standing Recliner w/Footrest	S	N/A	N/A	N/A
FS Dinette w/Credenza	S	N/A	N/A	N/A
U-Shape Dinette	N/A	S	N/A	N/A
Facing Dinette Booth	N/A	N/A	S	S
Electric Fireplace	S	S	S	S
Interior Flat Soft -Touch Vinyl Ceiling	S	S	S	S
Polished Porcelain Tile Flooring 12 x 24	S	S	S	S
Floor Heat Living Area	S	S	S	S
Safe-T-View Camera System	S	S	S	S
110V/USB Ports Throughout	S	S	S	S
Energy Efficient LED 3" Puck Flush Mount Ceiling & Accent Wall Lighting	S	S	S	S
Washer & Dryer	S	S	S	S
Manual Day/Night Roller Shades Throughout - Black/Black	S	S	S	S
Hardwood Cabinet Doors/Drawers	S	S	S	S
Select Hardwood Overhead Face Frames	S	S	S	S
Hardwood Window Valance/Slideout Trim	S	S	S	S
Comfortfit 95" Sleeper Sofa	0	N/A	N/A	NA
Facing Dinette Booth	0	N/A	N/A	N/A
L-Shape Dinette	N/A	N/A	0	N/A
FS Dinette w/Credenza	N/A	0	0	N/A
Theatre Seats	N/A	0	0	0
Refrigerator -19 cu.ft. Two Door Residential Stainless Steel - Whirlpool	S	S	S	S
Induction Electric Cooktop	S	S	S	S
Stainless Steel Over the Range 1000W Convection Microwave - Whirlpool	S	S	S	S
Polished Solid Surface Galley Countertop	S	S	S	S
Glass Tile Backsplash	S	S	S	S
Deep Double Bowl Undermount SS Sink	S	S	S	S
Polished Solid Surface Sink Covers	S	S	S	S
Manual Night Roller Shade - Black	S	S	S	S
Fantastic® Power Vent w/Wall Switch	S	S	S	S
Dishwasher	0	0	0	0

INTERIOR

INTERIOR

CAB INTERIOR

	38F	38K	38N	38W
King Size Dream Easy Serenity Memory Foam Mattress w/Adjustable Head	S	S	S	S
Lift-Up Bed w/Under Bed Storage	S	S	S	S
Recept w/USB Charging Ports in Nightstands	S	S	S	S
Designer Bedspread, Pillow Shams & Pillows	S	S	S	S
Wood & Fabric Window Treatments/Lambrequins	S	S	S	S
Manual Day/Night Roller Shades	S	S	S	S
Bedroom Tops	S	S	S	S
Cedar Lined Rear Wardrobe Closet	S	S	S	S
Dual Rear Wardrobe	N/A	S	S	N/A
Full Rear Wardrobe	S	N/A	N/A	S
Bunk Beds (28" x 73") with 5" Foam Mattress w/Ladder/Convertible Wardrobe	N/A	N/A	S	N/A
Bunk Beds (30" x 72") w/Bunk Ladder/Convertible Wardrobe	S	N/A	N/A	N/A
Bunk Bed w/Privacy Shades	N/A	N/A	S	N/A
Polished Solid-Surface Lavy Countertop	S	S	S	S
Polished Solid-Surface Lavy Shelf	N/A	S	S	N/A
Feature Lighting at Lavy Top	S	S	S	S
Tile Backsplash	S	S	S	S
Stainless Undermount Lavy Sink	S	S	S	S
Residential Double Handle Faucet	S	S	S	S
Hardwood Medicine Cabinet w/Mirror	S	S	S	S
Fiberglass Colored Shower Pan & Surround/Glass Shower Door	S	S	S	S
Shower Skylight	S	S	S	S
Metal Shower Head w/ On/Off, Sliding Adj Bar, Soap Dish & Single Valve Faucet	S	S	S	S
Porcelain Foot-flush Toilet w/Water Saver	N/A	S	S	N/A
Porcelain Maserator Toilet	S	S	S	S
Roof Vent Fan	S	S	S	S
Manual Night Roller Shade - Black	S	S	S	S
Dual Towel Rings & Toilet Paper	S	S	S	S
LG 32" Flat Screen LED TV (Front Overhead)	S	S	S	S
LG 32" Flat Screen LED TV (Bedroom)	N/A	S	S	N/A
LG 43" Flat Screen LED TV (Bedroom)	S	N/A	N/A	S
LG 43" Flat Screen LED TV (Living Area)	N/A	S	S	N/A
LG 49" Flat Screen LED TV (Living Area)	S	N/A	N/A	N/A
LG 49" Pop-up Flat Screen LED TV (Living Area)	N/A	N/A	N/A	S
Bose® Solo 5 TV Sound System	S	S	S	S
LG Blu-Ray Players (Living Area)	S	S	S	S
LED TV/DVD Combo in Bunk Bed Area (2)	N/A	N/A	S	N/A
Exterior Entertainment 48" TV w/Soundbar	S	S	S	S
LG 49" Flat Screen LED TV w/SoundBar (Living Area)	N/A	N/A	N/A	0
Firefly Multiplex Wiring	S	S	S	S
AC: Two-Roof Mount High Efficiency Ducted 15,000-BTU w/Chill Grill/Rear Heat Pump Third A/C	0	0	0	0
Aqua Hot 400D	S	S	S	S
2000-Watt Inverter/100-amp Converter	S	S	S	S
Service: 50-amp	S	S	S	S
8.0 kW Onan® Quiet Diesel Generator	S	S	S	S
6V Heavy Duty Chassis Batteries (2)	S	S	S	S
Auxiliary House Batteries (4)	S	S	S	S
Perwired - Roof Mounted Solar Panel	S	S	S	S
Energy Management System	S	S	S	S
Auto Gen Start	S	S	S	S
Battery Disconnect Switch	S	S	S	S
LP/CO & Smoke Detectors, Fire Extinguisher	S	S	S	S
Power Cord Reel	S	S	S	S
Black Tank Flush System	S	S	S	S
Water Pump: 12V 3GPM High Cap. Shurflo	S	S	S	S
Water Purification System	S	S	S	S
Electrical System w/Neutral Loss Protection	S	S	S	S
Cable TV/Satellite Hookup	S	S	S	S
Central Vacuum System	S	S	S	S
Surge Guard Transfer Switch	S	S	S	S
Tank Level Monitor System	S	S	S	S
Stackable Washer & Dryer	S	S	S	S
Enclosed & Heated Holding Tanks	S	S	S	S
Technology Package	0	0	0	0

BEDROOM

LAVY

ENTERTAINMENT

ELECTRIC & UTILITIES

DISCOVERY STANDARD FEATURES AND OPTIONS

\*\*CSA standards may require substitution or deletion to achieve conformance

## RV OWNERCARE

Limited one-year/15,000-mile coach warranty and three-year/45,000-mile structural warranty, whichever occurs first, and it is fully transferable for the first 12 months. RV OWNERCARE is one of the RV industry's most comprehensive programs and includes systems, appliances, components and construction, with no deductible and no service charge.

Chassis Warranty provided by Freightliner Custom Chassis Corporation®

YOUR LOCAL DEALER



## OUR VERY OWN FLEETWOOD RV MOTORHOME SERVICE CENTERS

At Fleetwood RV, we strive to deliver peace-of-mind at every turn. Our devotion to customer service starts with our trusted dealer network and spans to our own staff of motorhome service professionals at REV Recreation Group's regional technical centers. The motorhome service centers are strategically located throughout the United States to provide you convenient service wherever the road takes you.

Below, you'll find the closest motorhome service center, as well as a list of the other centers. Please visit [www.fleetwoodrv.com/motorhome-service-centers](http://www.fleetwoodrv.com/motorhome-service-centers) to schedule a Service Appointment.

East Coast REV Technical Center  
800-509-3417

West Coast REV Technical Center  
877-466-6226

## ROADSIDE ASSISTANCE. ANYWHERE. ANYTIME.



24/7 CUSTOMER SUPPORT FOR:

- FUEL
- BATTERY
- LOCKSMITH
- TOWING
- SLIDE-OUT ISSUES
- AND MUCH MORE!

**1-855-268-0414**

**REV GROUP**

Fleetwood RV is part of REV Recreation Group, a division of REV Group, Inc., a family of 33 industry-leading motor vehicle brands. At REV Group, we innovate, design and build products that connect and protect thousands of people every day—our trusted vehicles are engineered with the utmost rigor and precision to deliver the highest levels of performance, reliability, durability and safety.

### DISCLAIMERS

1. GVWR (Gross Vehicle Weight Rating) is the maximum permissible weight of this fully loaded motor home. The GVWR is equal to or greater than the sum of the (UVW) unloaded vehicle weight plus the (OCCC) occupant cargo-carrying capacity.

2. GAWR (Gross Axle Weight Rating) is the maximum permissible loaded weight a specific axle is designed to carry.

3. GCWR (Gross Combined Weight Rating) is the value specified by the motor home manufacturer as the maximum allowable loaded weight of this motor home with its towed vehicle. Towing and braking capacities may be different. Refer to Fleetwood and chassis manufacturer's manuals for complete information.

4. Length measured from front bumper to rear bumper (excludes accessories).

5. Excludes safety equipment and awnings.

6. Motor homes feature a body width over 96" which will restrict your access to certain roads. Before purchasing, you should research any state and/or province road laws which may affect your usage.

7. Tank manufacturer's listed water capacity (WC). Actual propane capacity is 80% of water listing as required by the safety code.

† The chassis manufacturer recommends the installation of a supplemental brake control system to activate the brakes on the vehicle or trailer you are towing. Hitch receiver ratings expressed are maximum for the hitch receiver installed and may require the purchase of additional equipment that is dependent on the weight of the towed load. Consult with hitch receiver manufacturer for further information.

\* UVW and OCCC are found on the label containing the federal certification tag in each RV.

\*\* Seatbelts and locations are shown in the brochure for display purposes only. Actual numbers and locations will vary by model.

\*\*\* All 2019 REV Recreation Group motorhomes include a limited one year/15,000-mile coach warranty and three-year/45,000-mile structural warranty, whichever occurs first, and is fully transferable for the first 12 months.

### FLEETWOOD MOTORHOME ASSOCIATION

As a Fleetwood RV owner, you're invited to become a member of the Fleetwood Motorhome Association (FMA). Becoming a member is the perfect way to meet other Fleetwood owners who love to travel across America and share in the RV lifestyle. Visit the FMA website at [www.fma4fun.org](http://www.fma4fun.org) to learn more and join the fun.

### CONTACT US

To locate a dealer near you, visit our website at [www.fleetwoodrv.com](http://www.fleetwoodrv.com) or call 1-800-322-8216. We can also be contacted at Fleetwood RV Customer Relations, P.O. Box 1007, Decatur, IN 46733.

**IMPORTANT—PLEASE READ:** Product information, photography and illustrations included in this publication were as accurate as possible at the time of printing. For further product information and changes, please visit our website at [www.fleetwoodrv.com](http://www.fleetwoodrv.com) or contact your local Fleetwood RV dealer. Prices, materials, design and specifications are subject to change without notice. All weights, fuel, liquid capacities and dimensions are approximate. Fleetwood RV has designed its recreational vehicles to provide a variety of uses for its customers. Each vehicle features optimal seating, sleeping, storage and fluid capacities. The user is responsible for selecting the proper combination of loads (i.e., occupants, equipment, fluids, cargo, etc.) to ensure that the vehicle's capacities are not exceeded.

[www.fleetwoodrv.com](http://www.fleetwoodrv.com)

©2018 REV Group, Inc. Printed in the USA, 10/18. Model Year 2019, First Edition.