

Tour

SNEAK PEEK

WINNEBAGO[®]



A Coach Worthy of Admiration

The Winnebago Tour[®] is the diesel-pusher that other diesel-pushers aspire to be. The Tour will be the subject of adulation with its bold exterior styling, re-designed dash, Flexsteel[®] luxury cab seats and an available premium cab sound system. Beneath the beauty is the ultimate performance of the 450-hp. XCL Maxum Chassis[®] with the new V-Ride rear suspension. This acts as the foundation for a coach packed with luxury amenities inside and out, such as a central vacuum system, the exclusive Rest Easy[®] sofa, full-coverage patio awnings, and an available tailgate package with an exterior entertainment center. Choose from two floorplans, both with a master bedroom with a king bed, multiple bathrooms, and Ultraleather[™] furniture. The Glide & Dine[®] dining table is offered on each floorplan for an elegant meal with family or friends. Diesel-pusher enthusiasts demand a premium experience, which is why the Winnebago Tour is one of the most sought-after coaches in the market.

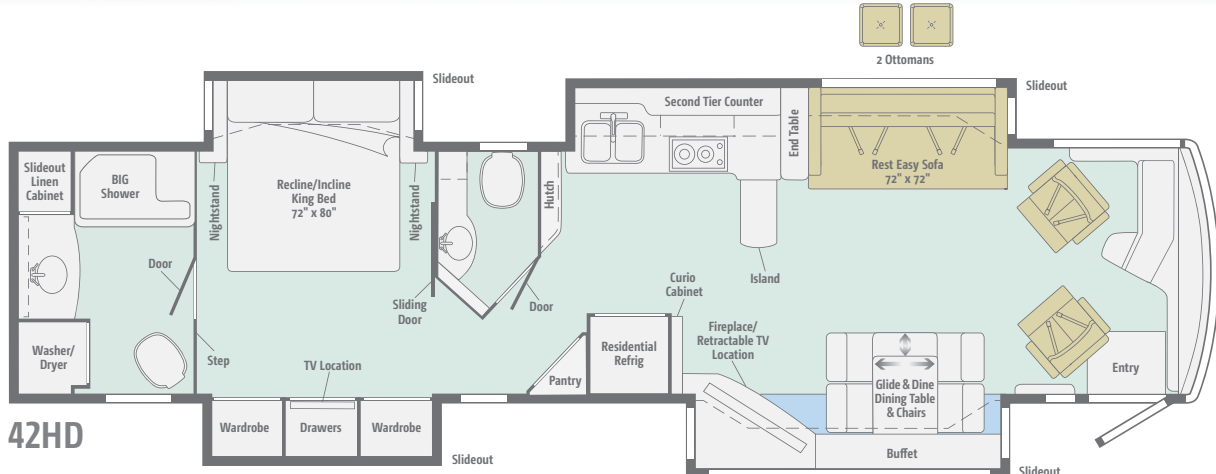
RECOGNIZED QUALITY



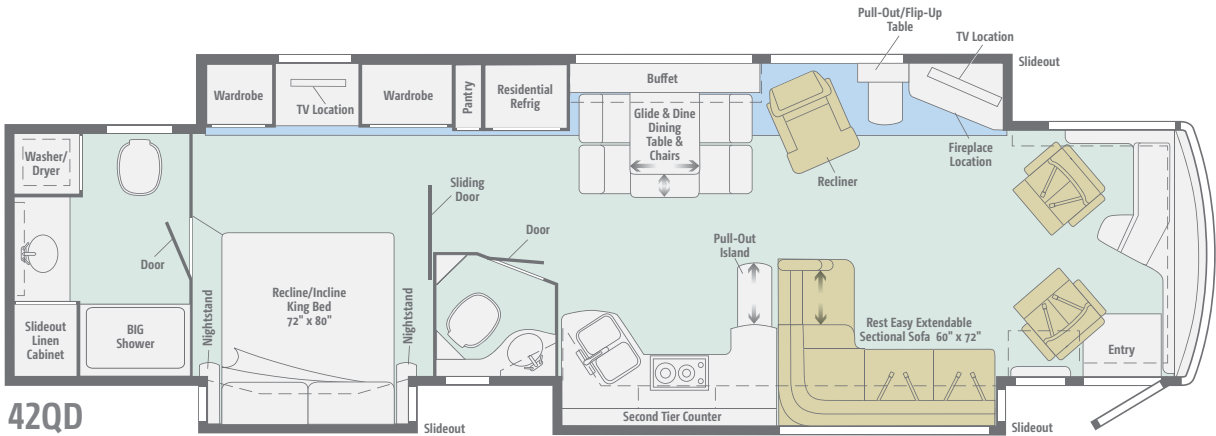
The Recreation Vehicle Dealer Association annually rates RV manufacturers and awards the Quality Circle Award to manufacturers that provide exceptional products, service and support. Winnebago is proud to be the only manufacturer that has received this award every year since its inception.

Floorplans & Specifications

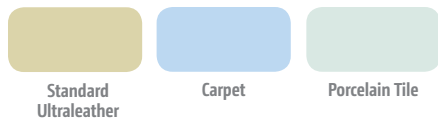
Dimensions shown are for sleeping space only and may vary due to styling differences. Dashed lines denote overhead storage areas.



42HD



42QD



Weights & Measures

	42HD	42QD
Length	43'	43'
Exterior Height ¹	12'10"	12'11"
Exterior Width ²	8'5.5"	8'5.5"
Exterior Storage ³ (cu. ft.)	196	196
Awning Length	14'6"/18'	14'6"/17'
Interior Height	7'	7'
Interior Width	8'0.5"	8'0.5"
Freshwater Tank Capacity ⁴ (gal.)	85	85
Water Heater Capacity (gal.)	Continuous	Continuous
Holding Tank Capacity - Black/Gray ⁴ (gal.)	51/95	51/71
LP Capacity ⁵ (gal.)	5.6	5.6
Fuel Capacity (gal.)	150	150
GCWR ⁶ (lbs.)	60,660	60,660
GVWR (lbs.)	45,660	45,660
GAWR - Front (lbs.)	15,660	15,660
GAWR - Rear (lbs.)	30,000	30,000
Wheelbase	279" + tag	279" + tag

- The height of each model is measured to the top of the tallest standard feature and is based on the curb weight of a typically equipped unit. The actual height of your vehicle may vary by several inches depending on chassis or equipment variations. Please contact your dealer for further information.
- Floorplans feature a wide-body design - over 96" in making your purchase decision, you should be aware that some states restrict access on some or all state roads to 96" in body width. Before making your purchase decision, you should confirm the road usage laws in the states of interest to you.
- The load capacity of your motorhome is designated by weight, not by volume, so you cannot necessarily use all available space when loading your motorhome.
- Capacities are based on measurements prior to tank installation. Slight capacity variations can result due to installation applications.

- Capacities shown are tank manufacturer's listed water capacity (W.C.). Actual filled LP capacity is 80% of listing due to overfilling prevention device on tank.
- Actual towing capacity is dependent on your particular loading and towing circumstances which includes the GVWR, GAWR, and GCWR, as well as adequate trailer brakes. Please refer to the Operator's Manual of your vehicle for further towing information. Not all items available in combination. See dealer for details. Winnebago's® continuing program of product improvement makes specifications, equipment, model availability, and prices subject to change without notice. Published content reflects the most current product information at time of printing. Please consult your dealer for individual vehicle features and specifications.

Visit us on WinnebagoInd.com.