

NEWMAR

20  
23

LUXURY COACH

# LONDON AIRE







## YOUR PALACE AWAITS.

Luxury and travel are synonymous inside the London Aire. Distinctive design features, tasteful accommodations, and functional-yet-stylish new technologies—within its six floor plans—make this coach stand apart.



## Spartan® K3 Tag Axle Chassis

Cummins X15 Diesel Engine // 605 HP // 1950 lb./ft. torque  
Sela Full-Paint Masterpiece Finish™ Exterior



45' // 6 floor plans





# COCKPIT

## Heated Driver and Passenger Seats

Power Lumbar, Recline, and Footrest  
Passenger Seat Workstation

## Industry-First Comfort Drive™ Adaptive Steering with Passive Steer Technology

## OnGuard™ Collision Mitigation Adaptive Cruise System with Adjustable Following Distance Control

## Mobileye® Lane Tracking and Lane Departure System

## Electronic Stability Control

## Digital Glare-Free Dash

## Xite Dash Radio

Apple CarPlay  
10" Dual Monitor  
Nav-N-Go Navigation System  
HD 360 Camera System with Predictive Grid Lines and Tri-View  
Rear Camera

## Passenger-Side Monitor (Optional)

## Push Button Start

## Wireless Charger Mats







# CABIN

**Four Décor Options:  
Hayworth\*, Sela\*, Cavalli, and Kelso**

**New Vinyl Ceiling Color**

**New Flooring**

**WiFi Ranger Denali LTE System with Spruce Router**

**10" Silverleaf® System to Control Elements  
of the Coach**

My Rozie Internet Connection

\*New for 2023



*Floor plan 4569 with Sela décor  
and Glacier cabinets*







# CABIN

**Three 15M Penguin™ Heat Pump  
Central Air Conditioners**

**Electric Radiant Heat Beneath Main Floor Tile**

**Samsung® 4K 50" LED TV on Televator  
and 43" Front Overhead**

Bose® 900 Sound Touch Soundbar

Bose® 500 Subwoofer







# GALLEY

**Whirlpool® 19.7 Cu. Ft. Refrigerator**

**30" Convection Stainless Microwave**

**Recessed Three Burner Cooktop**

**All Electric Recessed Mount Induction Cooktop** (Optional)

Available with 8 AGM Batteries or Lithium Ion 640 AHR Battery System

**Stainless Front Dishwasher in Drawer** (Optional)

**Glazed Maple Hardwood Cabinets**

Available in Four Matte or High Gloss Finish Color Options

Soft-Close Cabinet Doors

LED Lights Undermounted in Pull-Out Pantry and Cabinets

**Large Pantry**

Pull-Out Shelves

Push-to-Release Drawer Slides

Dedicated Serving Tray/Bakeware Space

**Super Polished Solid Surface Countertops**

**Kitchen Window** (Optional)







# DINETTE

## Door-Side Euro Booth Dinette\*

\*Floor plan 4521







# MASTER BEDROOM

**Redesigned Dresser Cabinets, TV, and Window Area**

**Lighted Wardrobe with Safe**

**Swing-Out Television**

**King Bed with Pillow Top Mattress**

Sleep Number® Mattress (Optional)

**Samsung® LED TV**







# BATHROOM

**Mid-Ship Bath\***

**Walk-through Mid-Ship Bath\*\***

**50" x 34" Residential Shower<sup>1</sup>**

**Aqua Miser® Shower System**

**Dual Sink Vanity\***

**Linen Storage**

**Splendide® Two-Piece Stacked Washer and Dryer**

**Chinook Dual Loop Heat with Continuous Hot Water**

**Super Polished Solid Surface Countertop**

**Cathedral Ceiling for Added Height** (Rear Bath Floor Plans)

**Crown Molding\***

\* Select Floor Plans

\*\* Floor plan 4586

<sup>1</sup>Shower sizes vary by floor plan







# EXTERIOR

**Lighted Front Grill Newmar Badge**

**SilverStar Ultra Headlight Bulbs**

**Basement Storage with Easy-Close Doors**

**Dometic® 3.0 Cu. Ft. Freezer on Pull-Out Tray**

**Exterior Entertainment Center** (Optional)

Samsung® 43" 4K LED TV

Bose® Soundbar

**12.5 kW Cummins Onan® Diesel Generator**

**10w Solar Panel** (to charge chassis battery)







# EXTERIOR

**Industry-Exclusive Full-Paint Masterpiece Finish™  
with Cut and Buff**

**Four Graphic Design and Color Options**

**Industry-Exclusive STAR Foundation**

**Lithium Ion Battery System** (Optional)

Two Lithionics 320 AHR Battery Packs

Surge Guard Transfer Switch





A photograph of the interior of a yacht, showing a well-furnished living area with sofas, armchairs, and a central console. The image is overlaid with a dark blue, semi-transparent filter. The text 'INTERIOR/EXTERIOR DESIGN OPTIONS' is centered over the image in a gold, serif font.

INTERIOR/EXTERIOR  
DESIGN OPTIONS



# Cavalli



Awning Color: Charcoal Tweed

**CAVALLI INTERIOR** a. Furniture/Fabric b. Flooring c. Counter Top



**CABINET FINISHES**



\*Exterior colors and interior décor options can be matched to customer preference.

\*Available in High Gloss or Matte Finish







# Hayworth



Awning Color: Charcoal Tweed

## HAYWORTH INTERIOR

a. Furniture/Fabric   b. Flooring   c. Counter Top



## CABINET FINISHES



\*Exterior colors and interior décor options can be matched to customer preference.

\*Available in High Gloss or Matte Finish



# Kelso



Awning Color: Linen Tweed

## KELSO INTERIOR

a. Furniture/Fabric   b. Flooring   c. Counter Top



## CABINET FINISHES



*\*Exterior colors and interior décor options can be matched to customer preference.*

*\*Available in High Gloss or Matte Finish*







# Sela



Awning Color: Charcoal Tweed

## SELA INTERIOR a. Furniture/Fabric b. Flooring c. Counter Top



## CABINET FINISHES



\*Exterior colors and interior décor options can be matched to customer preference.

\*Available in High Gloss or Matte Finish









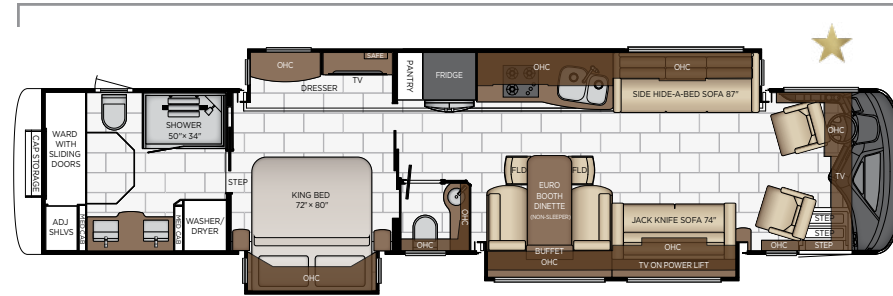
# FLOOR PLANS & SPECIFICATIONS







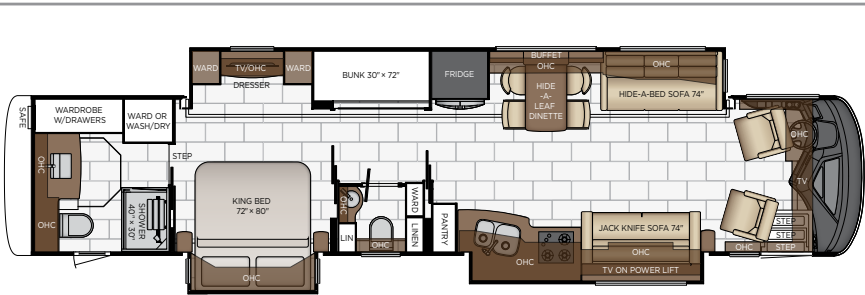
Length: 44' 10"



**4521**

Length	44' 10"	Grey Tank	80 gal.
Width	101.5"	Sewage Tank	60 gal.
App. Overall Height	13' 04"	Water Tank	105 gal.
Interior Width	95.5"	Propane Tank	22 gal.
Interior Height	83"	Furnace	50,000 btu

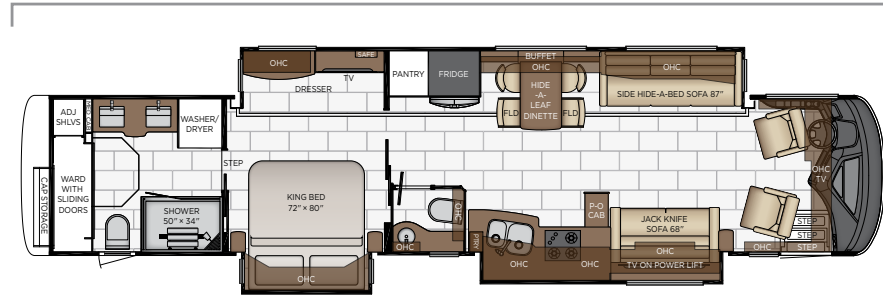
Length: 44' 10"



**4535**

Length	44' 10"	Grey Tank	80 gal.
Width	101.5"	Sewage Tank	60 gal.
App. Overall Height	13' 04"	Water Tank	105 gal.
Interior Width	95.5"	Propane Tank	22 gal.
Interior Height	83"	Furnace	50,000 btu

Length: 44' 10"



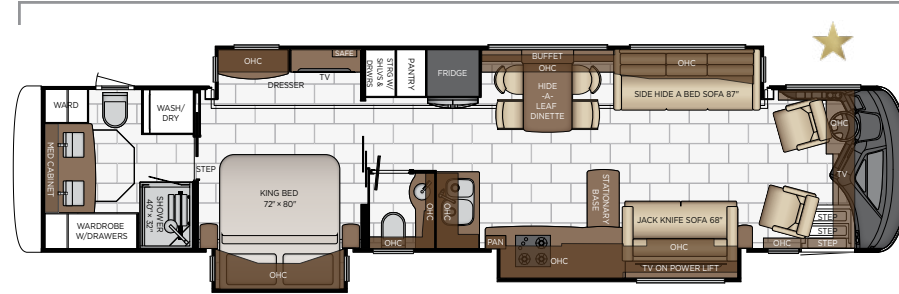
**4551**

Length	44' 10"	Grey Tank	80 gal.
Width	101.5"	Sewage Tank	60 gal.
App. Overall Height	13' 04"	Water Tank	105 gal.
Interior Width	95.5"	Propane Tank	22 gal.
Interior Height	83"	Furnace	50,000 btu





Length: 44' 10"

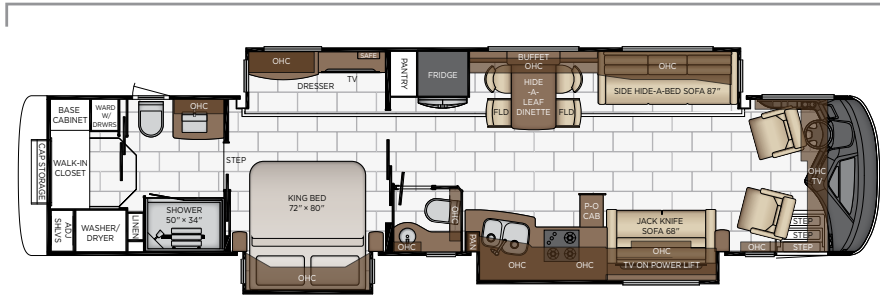


**4569**

Length	44' 10"
Width	101.5"
App. Overall Height	13' 04"
Interior Width	95.5"
Interior Height	83"

Grey Tank	80 gal.
Sewage Tank	60 gal.
Water Tank	105 gal.
Propane Tank	22 gal.
Furnace	50,000 btu

Length: 44' 10"

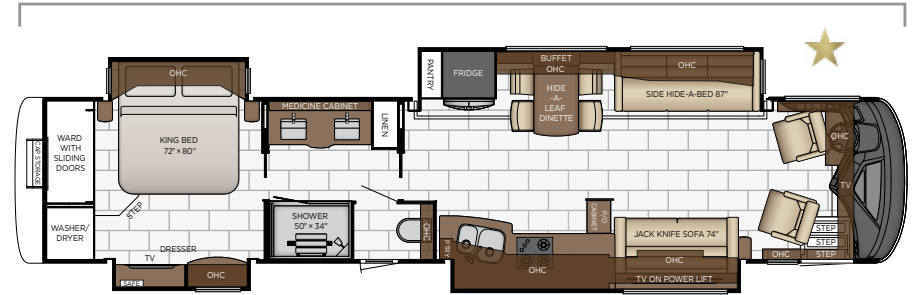


**4579**

Length	44' 10"
Width	101.5"
App. Overall Height	13' 04"
Interior Width	95.5"
Interior Height	83"

Grey Tank	80 gal.
Sewage Tank	60 gal.
Water Tank	105 gal.
Propane Tank	22 gal.
Furnace	50,000 btu

Length: 44' 10"



**4586**

Length	44' 10"
Width	101.5"
App. Overall Height	13' 04"
Interior Width	95.5"
Interior Height	83"

Grey Tank	80 gal.
Sewage Tank	60 gal.
Water Tank	105 gal.
Propane Tank	22 gal.
Furnace	50,000 btu

★ - new floor plan



# QUALITY YOU CAN FEEL

Like a fine home, the 2023 London Aire is framed 16 inches on center, and is covered by a fiberglass roof with an integrated gutter rail.



SPARTAN®											
FLOOR PLAN	ENGINE HP	AXLE RATIO	FUEL CAP.	WHEEL BASE	FRONT GAWR	REAR GAWR	TAG GAWR	GVWR	GCWR	APP. UVW	APP. NCC
4521	605	4.3	150	292+TAG	20000 lb.	20000 lb.	14000 lb.	54000 lb.	74000 lb.	46500 lb.	7500 lb.
4535	605	4.3	150	292+TAG	20000 lb.	20000 lb.	14000 lb.	54000 lb.	74000 lb.	46500 lb.	7500 lb.
4551	605	4.3	150	292+TAG	20000 lb.	20000 lb.	14000 lb.	54000 lb.	74000 lb.	45800 lb.	8200 lb.
4569	605	4.3	150	292+TAG	20000 lb.	20000 lb.	14000 lb.	54000 lb.	74000 lb.	46500 lb.	7500 lb.
4579	605	4.3	150	292+TAG	20000 lb.	20000 lb.	14000 lb.	54000 lb.	74000 lb.	46000 lb.	8000 lb.
4586	605	4.3	150	292+TAG	20000 lb.	20000 lb.	14000 lb.	54000 lb.	74000 lb.	45800 lb.	8200 lb.

The content in our literature depicts and describes products that are subject to change. For the most recent images and information, please visit [NewmarCorp.com](http://NewmarCorp.com).

Lengths, heights, widths, and dry weights are approximate. Weight will vary based on optional equipment added to the above base weight.

**GAWR:** Gross Axle Weight Rating is the maximum permissible weight for an axle.

**GVWR:** Gross Vehicle Weight Rating is the maximum permissible weight for a fully loaded motor coach.

**GCWR:** Gross Combination Weight Rating is the value specified by the manufacturer of the vehicle as the maximum allowable loaded weight of this motor coach and any towed trailer or towed vehicle.

**UVW:** Unloaded Vehicle Weight is the weight of this motor coach as built at the factory with full fuel, engine oil, and coolants. Does not include cargo, fresh water, propane gas, or dealer-installed accessories.

**NCC:** Net Carrying Capacity is the maximum weight of all occupants, including the driver, personal belongings, food, fresh water, waste water, propane gas, tools, tongue weight of towed vehicle, dealer-installed accessories, etc., that can be carried by the motor coach.

**Specifications supplied by the chassis manufacturer.**

**London Aire R-Values:**

Roof R-Value = 24

Sidewall R-Value = 11

Floor R-Value = 16

Basement R-Value = 16





# FEATURES & OPTIONS





## EXTERIOR FEATURES

Full-Paint Masterpiece Finish™ with Cut and Buff and Beta Fusion Protection on Front Cap

Lighted Newmar Badge in Front Grill

Convex Exterior Chrome Mirrors with Remote Control, Defrost, Turn Signals and Side-View Cameras

Entrance Door with Automatic Step

Rear Hitch for Towing Car

Assist Handle at Entrance Door

Mud Flaps

Rear Protective Tow Guard with Stainless Steel Newmar Name Cutout

Undercoating

Hydraulic Leveling Jacks

Stainless Steel Exterior Trim Pieces and Entrance Door Kick Panel

Storage Bins in Pegboard Compartment

Storage Shelf Above Freezer

Chrome Power Baggage Door Locks, Keyless Entrance Door with Touch Pad and Door Bell

### OPTIONS

Stainless Steel Trim Kit for Exterior Compartment Doors

Flag Pole Bracket

Storage Tray 26 X 90 Power with Shelf In Top of Compartment, Location-Bay 2

Storage Tray 26 X 91 Non-Power with Shelf In Top of Compartment, Location Bay 2

Storage Tray 40 X 90 Power with Shelf In Top of Compartment, Location-Bay 3

Storage Tray 42 X 91 Non-Power with Shelf In Top of Compartment, Location-Bay 3

Storage Tray 43 X 56 Non-Power, Location-Bay 4

## CONSTRUCTION FEATURES

Fiberglass Roof and Integrated Gutter Rail

Gelcoated Fiberglass Exterior Sidewalls, Front and Rear Caps

Aluminum-Frame Sidewalls and Roof Construction, 16" on Center

5/8" Foam Insulation Laminated in Sidewalls and Ceiling

Polar Pak R19 Batten Insulation on Roof

Automatic Mechanical Lock Arms on Non Hydraulic Slideout Rooms-Paddle Style

Egress Door with Ladder System

New Baggage Doors with Inner Skin

New Basement Storage Door Seal

## WINDOWS, AWNINGS, & VENTS

Frameless Double-Pane Tinted Safety-Glass Windows

Fan-Tastic® Vent with Rain Sensor in Kitchen, Bathroom and Enclosed Stool Room

Hardwood Louvered Cover on Fan-Tastic® Vent in Kitchen

Skylight Above Shower\*

Girard® Package-Two Nova Side Awnings, Slideout Covers, Entrance Door and Power Window Awnings

Large Non-Ventilated Living Room and Dinette Windows

One-Piece Tinted Windshield

Driver Side Power Window

### OPTIONS

Kitchen Window

Bunk Windows

## CHASSIS FEATURES

Air Leveling Control System

Aluminum Wheels

Electronic Chassis Information Center in Dash

Electronic Stability Control

Cruise Control

Comfort Drive™ Steering with Power Column with Adjustable Control

Recessed Fuel Fills with Crossover to Fill from Either Side

Back-Up Alarm

Anti-Lock Braking System

Chassis Battery Disconnect

Blind Spot Detection

Automatic Headlights On/Off

Push Button Engine Start

OnGuard™ Collision Mitigation Adaptive Cruise System with Adj. Following Distance Control on Spartan® Chassis

Spartan® K3 Tag Axle, 605Hp on 45' London Aire

Tire Pressure Monitoring System

Mobileye® Lane Tracking and Lane Departure Warning System

Steering Wheel Nine Function Switch Pod in Center on Spartan® Chassis

Tank Dump Side Tilt Mode

Trailer Tow Mode

Valid Digital Glare Free Dash

Column Drive Steering Control on Toggle Switch

### OPTIONS

Curt Spectrum Integrated Brake Control on Spartan® Chassis







## AIR CONDITIONING & HEATING

- Three 15M Penguin™ Heat Pump Central Air Conditioners with Remote Control Thermostat
- Chinook Dual Loop Heat with Continuous Hot Water
- Dash Heater and Air Conditioner
- Driver and Passenger Dash Overhead Ventilation System
- Wall Mounted Sensors for Heating and Air Conditioning
- Roof Air Conditioning Drainage System
- Electric Radiant Heat Installed Below Main Floor Tile

## ELECTRICAL FEATURES

- 12.5 kW Cummins Onan® Diesel Generator
- Generator Start/Stop Function on Touchscreen in Water Bay Compartment
- 10 Watt Solar Panel to Charge Chassis Battery
- 50 Amp Electrical Service with Flexible Cord with Automatic Transfer Switch
- Six 6-Volt House Batteries
- Battery Disconnect Switch for House Battery
- 3000 Watt True Sine Inverter
- 12 Volt Auxiliary Receptacle on Dashboard
- Emergency Engine Start Switch
- Engine Block Heater
- Energy Management System
- Exterior Security Lights
- Mid-Ship Side Turn Signals
- LED Lights Recessed in Ceiling and Underneath Overhead Cabinets
- LED Lighting in Pull-Out Pantry, Kitchen and Bathroom Base Cabinets
- Accent Lights in Feature Ceiling, Slideout Fascia Trim and Lambrequins
- LED Lights in Exterior Storage Compartments on Automatic Switches and Controlled by an Interior Master Switch
- LED Lights Installed Below Under Door Side Slideouts
- Lights in Wardrobes
- Manually Operated Hold-To-Run Slideout Switch
- Automatic Generator Start on Low Battery or Temperature Setting
- Cable TV Connection
- Interior Courtesy Lights
- USB Outlet at Dinette and Bedroom Night Stand
- USB Outlet at for Driver Use
- 110 Volt/USB Outlet at Head of Each Bunk Area\*
- 110 Volt Recept in Bed Overhead with Two Pass-Through Ports
- KIB Touch Screen Interior Light and Shade Controls

- Power Rewind Wheel with 50' Cord\*
- Recessed Docking Lights
- Reading Lights at head of Bed-Dimmable with Adjustable Aim
- Secondary Multiple Touch Screen in Bedroom
- Silverleaf® Multiplex Electrical Wiring System
- Rozie Remote Internet Connection for Silverleaf® Multiplex System
- System Control App to Control Numerous Features from Personal Device
- Lighted Vanity Mirrors
- Solar Prep with Six Gauge Wire from Roof to House Battery Compartment
- Spare Fuses in Chassis and House Fuse Panels
- Wireless Phone Charger Pad in Driver Area
- Wireless Charging Mat Built into Passenger Console
- Transfer Switch with Surge Protector
- Dash Radio, Cameras and Monitors to Power-Up from both House Batteries and Ignition
- Side Tilt Tank Dump Mode Controls to Silverleaf® Water Works Panel
- Dash Radio, Cameras and Monitors to Power-Up from both House and Ignition

## OPTIONS

- LED Strip Lighting Installed Under Off Door Sideouts
- Four Flexible 110 Watt Solar Panels on Roof
- 30 Amp/120 Volt Cord Connection for Stacker Trailer

## PLUMBING & BATH FEATURES

- Demand Water System
- Sewage Holding-Tank Rinse
- Dometic® 321 China Bowl Stool or Macerator Stool\*
- Tied Shower Walls with Glass Door
- Fold-Down Shower Seat
- Water Filter for Entire Unit
- Exterior Shower
- Auto Fill for Fresh Water Tank
- Power Water Hose Reel
- Grey Holding Tank Rinse
- Aqua Miser® Shower System
- Hot Water Line to Generator Area\*
- Bladder Tank for Water Pump System

## OPTIONS

- Assist Handle in Each Shower
- RV Sanicon Turbo System



## INTERIOR FEATURES

Designer Feature Ceiling and Cathedral Ceiling with Added Height on Rear Bath Floor Plans\*

Tile Floor in Kitchen, Bathroom, Bedroom and Living Area

Auto Motion Power Window Shades and Lambrequins

Auto Motion Power Shades for Windshield and Driver/Passenger Side Windows

Hardwood Window Sills

Hardwood Raised Panel Interior Passage Doors

Flush Handles on Swinging Bath Doors

Maximized Shoe Storage Shelves Recessed into Rear of Wardrobe\*

Interior Assist Handle at Main Entry Door

Fitted Non-Quilted Bedspread with Accent Pillows

Safe Located in Bedroom Wardrobe

Wastebasket in Kitchen Base Under Sink

Interior Passage Door Hardwood Raised Panel

Finished Cover Over KIB Lighting Control Box

## CABINETS & FURNITURE

Bermuda Glazed Maple Hardwood Cabinets with Raised Panel Doors and Matte Finish

Concealed Hinges on Cabinet Doors

Super Polished Solid Surface Countertop in Bathroom and Bedroom

Super Polished Solid Surface Countertop in Kitchen with Under Mounted Stainless Steel Sink and Sink Covers

Lifts on Bed Top

Passenger Seat Work Station

Pull-Out Pantry Shelves\*

Push-to-Release Drawer Slides in Pantry

Pantry with Space for Serving Trays/Bakeware

Drawers with Dove Tail Side and Self-Closing Full Extension Self-Closing Guides

Soft-Close Cabinet Doors\*

Villa Ultra Leather Sofa and Driver/Passenger Seats with Integrated Seat Belts

Heated Front Seats with Power-Lumbar, Recline, Footrest and Standard Width Passenger Seat

Plush Pillow Top Mattress

Extended Rotation Concealed Hinge for Washer/Dryer Cabinet Door

Side Folding Hide-A-Bed Sofa with Memory Foam Mattress\*

Mesh Cell Phone Holder at Each Bunk Bed\*

Full Height Wardrobes Beside Lav\*

Molded Silverware Divider Tray

Driver Seat with Vibrator for Haptic Feedback

Dinette Euro Booth with Two Table Leaves and Two Folding Chairs\*

Cooktop Cover Flush, Matching Countertop Material

## OPTIONS

Glacier Glazed Maple Hardwood Cabinets with Mitered Raised Panel Doors-High Gloss or Matte Finish

Bermuda Glazed Maple Hardwood Cabinets with Raised Panel Doors with High Gloss Finish

Driftwood Glazed Maple Hardwood Cabinets with Raised Panel Doors-High Gloss or Matte Finish

Sable Maple Hardwood Cabinets with Raised Panel Doors-High Gloss or Matte Finish

Sleep Number® R5 Radius Corner Air Mattress

Power Extenda Flex Dinette with Two Fixed/Two Folding Chairs

Convertible Dinette with Fore/Aft Seating

Euro Booth Dinette with Two Table Leaves and Two Folding Chairs

Euro Booth/Hide-A-Bed Combo 162" with Two Tables Leaves and Two Folding Chairs

Combination Desk with Buffet Table, Two Fixed/Two Folding Chairs

Two Ottomans\*

Two Recliners with Lampstand and Reading Lights

Passenger Seat Queen-Size

Powered Theater Seating 84"

Powered Theater Seating 87"

## APPLIANCES & ACCESSORIES

Stainless Steel 30" Convection Microwave with Recessed Three Burner Cooktop

Air Horns

Whirlpool® 19.7 Refrigerator

Splendide® Two-Piece Stacked Washer/Dryer

Dometic® 3.0 Cf Freezer on Pull-Out Tray in Exterior Baggage Compartment\*

Storage Above Freezer

Central Vacuum with Tool Kit

## OPTIONS

All Electric, Recessed Mount Induction Cooktop and Eight AGM Batteries

All Electric, Recessed Mount Induction Cooktop, Lithium Ion 640 AHR Battery System with Two 3000W Inverters

Dishwasher in Drawer with Stainless Steel Front





### AUDIO, VIDEO & ACCESSORIES

Samsung® LED TV Living and Bedroom Areas (TV Sizes Vary Per Floor Plan)

Samsung® 50" 4K LED TV on Televator in Living Area\*

Samsung® 43" 4K LED TV in Front Overhead

Bose® 500 Subwoofer

Bose® 900 Sound Touch Soundbar in Livingroom

Rearview Color Monitor System

Winegard Rayzar Automatic Digital TV Antenna

Satellite Dish Prep on Roof

Radio Sirius® XM Capability with Antenna (Does Not Include Monthly Subscription)

Two Bedroom Radio Speakers

TV Jack and 110 Volt Recept in Door Side Exterior Storage Compartment

Cat 6 TV Cables

Infrared Repeater System to Operate Audio/Visual Components

WiFi Ranger Denali/Spruce LTE

Xite Dash Radio with Apple CarPlay, 10" Dual Monitor with Nav-N-Go Navigation System

Xite HD 360 Camera System with Predictive Grid Lines and Tri-View Rear Camera

Remote Navigation Programming Via SD Card

10 Bc Fire Extinguisher, Smoke Detector, Propane and Carbon Monoxide Detector

Harmony Universal Remote

#### OPTIONS

Exterior Entertainment Center in Sidewall with Samsung® 43" 4K LED TV and Soundbar

Exterior Entertainment Center in Storage Compartment with Samsung® 43" 4K LED TV and Bose® Soundbar

Two-19" Skyworth TV/DVD Monitors\*

Extra Monitor on Passenger Side

Rear Camera (2) Prep for Use with Stacker Trailer

Universal Toll Module

WiFi System Everest with Aspen Interior Router

Winegard Automatic Open Face Satellite Dish-for DISH HD and Bell HD TV

Winegard Automatic Open Face SWM Satellite Dish-for DIRECTV Std/HD and In-Motion DIRECTV Std, DISH Std/HD

Winegard Automatic Open Face Satellite Dish and Winegard In-Motion for DISH Network

Winegard Automatic Open Face Satellite Dish-for DIRECTV

Winegard In-Motion Dome Satellite Dish-for DISH Std/HD, DIRECTV Std and Bell Canada

\*CHECK WITH DEALERSHIP ON FLOOR PLAN AVAILABILITY







## A. ROOF

- Fiberglass Roof
- Batten Insulation
- A/C Ducting
- 16" on Center Aluminum Rafter Framing
- Kraft Paper Vapor Barrier
- 5/8" Bead Foam
- 3/16" Panel
- Padded Vinyl Overlay

## B. SIDEWALL

- Interior Wall Panel
- 5/8" Bead Foam
- Kraft Paper Vapor Barrier
- Batten Insulation
- Composite One-Piece Gelcoat Exterior Sidewall
- Aluminum Framing

## C. FLOOR

- Carpet/Tile
- Carpet Padding
- 5/8" Floor Decking
- Batten Insulation
- 16" on Center Wood Framing
- Polyethylene Moisture Barrier

## D. EXTERIOR

- 15M Penguin™ Heat Pump Central Air Conditioner
- One-Piece Bonded Windshield
- Coated Aluminum Wheels
- Frameless, Double-Pane, Tinted Safety Glass Windows
- Side-Hinged Baggage Doors with Optional Pull-Out Tray

# THE NEWMAR CUSTOMER EXPERIENCE

The Newmar difference goes beyond our industry-leading motor coaches to provide you with an unrivaled ownership experience.



## QUALITY FROM THE START

Every Newmar is crafted one at a time by folks who have spent an average of eight years building them. And each coach we assemble must undergo more than 1,000 tests and checks before ever leaving our factory.



## CAREFULLY SELECTED DEALERS

We view our dealership network in terms of quality, not quantity. Each of our dealers acts as a partner in our shared mission to exceed your highest of expectations, for an ownership experience that's second to none from day one.



## EVERYTHING IN ONE PLACE

As a Newmar owner, you'll find resources specific to your coach through Newgle, an easy-to-use knowledge base that houses everything from user guides to technical support documents.



## FRIENDS FOR LIFE

Meet fellow owners through the Newmar Kountry Klub, a top social club for RV travelers that hosts rallies and other special events throughout the U.S. and Canada.



## SEAMLESS SERVICE

When you join the Newmar family, we pair you with a dedicated service specialist with expert knowledge of your exact coach. Our service specialists guarantee dealer warranty authorizations within four business hours and ship all in-stock parts the same day, free of charge.



## ROCK-SOLID PROTECTION

All models include a one-year/unlimited mileage limited warranty and a five-year, non-transferable structural warranty that covers your coach's superstructure in the event it fails to perform. Ask your Newmar dealer for more details.



# OUR PARTNERS

Newmar Quality Begins with the Company We Keep

You deserve class-leading performance from names you can trust. That's why we only work with suppliers dedicated to providing our customers with unrivaled quality, comfort, and support.

## **BASF**

We create chemistry

The Coatings division of BASF is a global expert in the development and production of innovative and sustainable OEM and refinish coatings that deliver solutions beyond your imagination.



## **INDUSTRIAL FINISHES**

Industrial Finishes has supported RV manufacturers for over four decades. The Industrial Finishes paint process delivers uncompromising quality, providing your coach with a true "Masterpiece" finish.



Driven By You

## **FREIGHTLINER CUSTOM CHASSIS**

Freightliner® Custom Chassis Corp. (FCCC) is renowned for delivering the industry's best ownership experience through exceptional 24/7 factory-direct support, exceptional ride and handling, and developing high-performance innovations such as DRIVETECH. It's the only RV driving system that prioritizes safety and automotive luxury by putting every command at your fingertips.



## **RIVERPARK**

At RiverPark, we proudly represent the leading brands in consumer electronics—brands you know and trust to provide exceptional quality and innovative technology. Newmar features Samsung's incredible 4K TVs, Xite Infotainment systems featuring Nav-N-Go Navigation, Bose® soundbars, and JBL and Infinity premium audio. Step into a 2023 Newmar and experience dazzling audio and video performance throughout the coach.



RV CHASSIS

## **SPARTAN MOTORS**

Spartan® Motors is an American company with over 30 years of experience designing and manufacturing the premier motorhome chassis, which provides superior performance, exceptional safety ratings, and industry-leading technology.



WHEN YOU KNOW THE DIFFERENCE<sup>SM</sup>