

Newmar | 2020 Ventana  
Diesel Motor Coach

33.8734° N, 115.9010° W

# 2020 — Ventana

*Diesel Motor Coach*





Say *yes* to adventure.



Where will *your coach* take you?

Charlotte enjoying a book with a view

© Michael





## *Go Beyond What's Expected — 2020 Ventana*

The 2020 Ventana is the recipient of an extensive and stunning redesign that makes it more beautiful than ever before. Integrated awnings and newly styled front and rear caps lend a new look and profile to the exterior. Shown here in Largo, the industry-exclusive full-paint Masterpiece™ finish adds even more striking character. With standard Comfort Drive™ steering, you'll always enjoy smooth, easy handling. Convex exterior mirrors help you keep an eye on your surroundings and feature remote control, a defrost function, and turn signal indicators. Choose from thirteen unique floor plans, each built on a Freightliner® chassis with a tag axle. Or you may select the optional Spartan® tag axle chassis on floor plans 40'-43' in length.

*Largo full-paint Masterpiece™ finish*



## *Exceptional* — Comes Standard

Ventana's redesign continues into its well-appointed cockpit, where you'll discover new captain's chairs that offer you six-way power with power lumbar and a footrest. What's more, the passenger seat is equipped with a workstation. For your convenience, a wireless charging mat is built into the dash, and for your entertainment, a JBL sound system with a subwoofer stands ready to play your favorite music or audiobooks. Also featured is a new digital instrument panel. Side-view cameras are among the standard safety equipment, and plenty of optional upgrades are available to suit your preferences, including an Omniview 360 camera system, a Rand McNally™ navigation system, in-coach Wi-Fi, and a universal toll module.



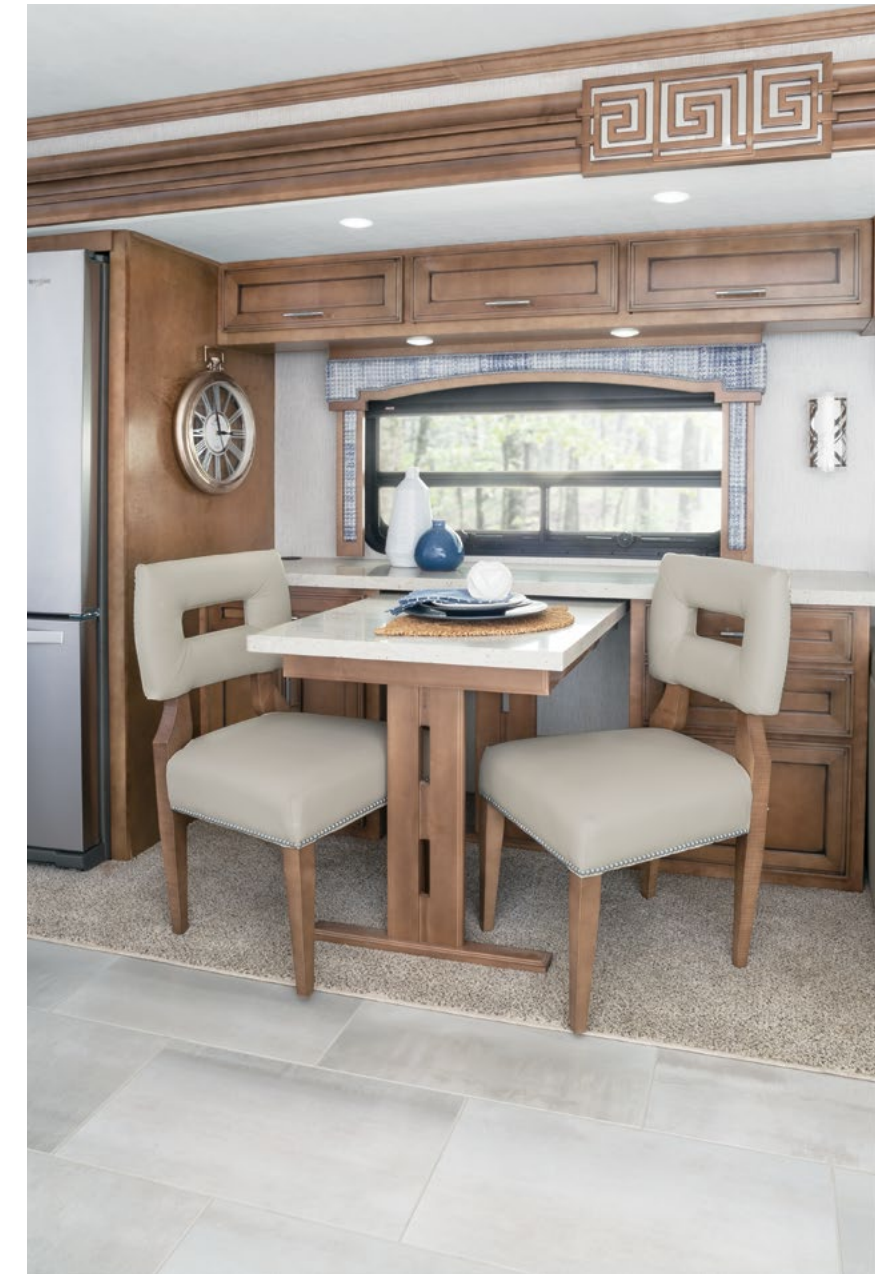
*Floor plan 4369 with Largo décor and  
Newport Glazed Maple cabinetry*





## *Make No — Compromises*

Boasting restyled furniture, a new designer feature ceiling, and new wall sconces for 2020, the Ventana living room invites you to make yourself comfortable. Your favorite entertainment is always close at hand thanks to a retractable Samsung LED 4K TV, two Blu-ray® players, and a Bose® Solo 5 soundbar. Wall-mounted sensors for heating and air conditioning help assure a pleasant temperature. You're free to choose the furniture configuration that suits your preferences with options that include a recliner with lampstand, a sofa that converts easily to a bunk bed, and theater seating with storage ottomans—shown here. Your dinette options abound as well, such as the pictured combination desk/dinette.







## *Design — You Crave*

The Ventana kitchen is appointed with everything you need to make your favorite meals and snacks. Redesigned cabinet doors, soft-close drawers with new hardware, and polished solid surface countertops add equal parts style and function to the space. A brushed aluminum refrigerator and a stainless steel microwave with a three-burner recessed gas cooktop come standard, while the large menu of optional upgrades includes a Whirlpool® refrigerator, a dishwasher, and a flush-mount induction cooktop. Smart storage for your culinary essentials is provided by a spacious pantry as well as a pull-out cabinet, pictured here in floor plan 4369.







## *Escape — to Serenity*

In the Ventana bedroom, you're presented with a plush pillow top queen- or king-size mattress, which may be upgraded to an optional Sleep Number mattress. The redesigned headboard is the perfect backdrop for a beautiful quilted bedspread and matching accent pillows. Find generous storage for your belongings in the hardwood dresser, which is flanked by two wardrobes. Situated above the dresser, find a Samsung LED TV and a Blu-ray player—the perfect accompaniments to a relaxing afternoon or a movie night.

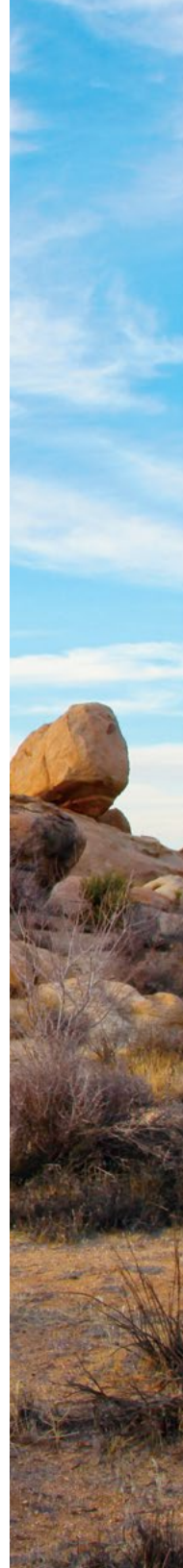






## *Space* — that Soothes

With its new geometric sink bowls and beautiful tile backsplash, the Ventana master bathroom is your elegant escape. Floor plan 4369 grants you a twin-sink vanity and an extra-large 50" x 34" shower featuring a glass door, an Aqua Miser shower system, and an optional fold-down seat. Also shown here is the optional laundry station, which comprises a two-piece stacked washer and dryer. Select Ventana floor plans also offer a half-bath that boasts many of the same fine appointments found in the master. It's the perfect way to treat your guests.







2018 Ventana shown

## *Anywhere — is Possible*

At Newmar, we believe everyone deserves to experience the freedom and joy of open-road travel, regardless of physical ability. Ventana 4311 is a testament to that idea, combining a BraunAbility® remote-control power lift and roll-in shower with the amenities you deserve, such as an optional retractable 50" Samsung 4K LED TV with Blu-ray/DVD player, a full-wall rear wardrobe, and a hide-a-bed sofa.



2015 Chateaux décor shown





## *Exactly* — What You Want

The Ventana's outdoor living space begins with the integrated Girard power side awning and the Carefree entrance door awning, which come equipped with a wind sensor, remote control, and LED lights. The choice to upgrade to one of several available awning packages is yours. Additional customization options include an outdoor entertainment center, a pass-through storage tray, and a patio hammock package. For your convenience, power baggage door locks are standard equipment, as is the keyless entry door with a touchpad and doorbell. Frameless double-pane tinted windows feature safety glass, and the exterior baggage doors, basement storage, and fenders are now taller in height. And an 8.0 kW Cummins Onan® diesel generator supplies reliable power for your coach, whether you're sitting under the awning or relaxing inside.



# Exterior and Interior Décor



CHATEAU EXTERIOR

*Awning Color: Linen Tweed*



CHATEAU INTERIOR

*a. Furniture/Fabric b. Flooring c. Counter Top*



LARGO EXTERIOR

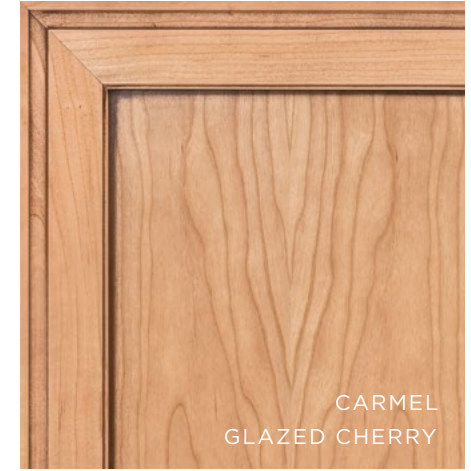
*Awning Color: Charcoal Tweed*



WINDWOOD EXTERIOR

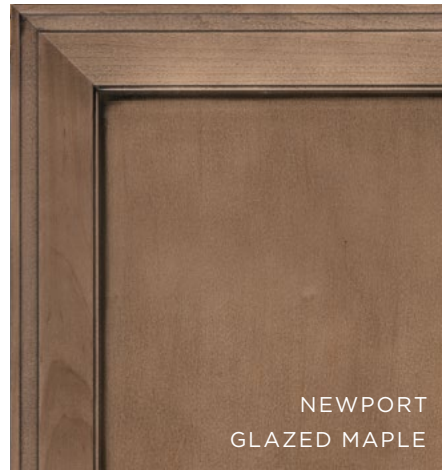
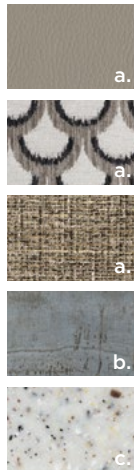
*Awning Color: Charcoal Tweed*





LARGO INTERIOR

*a. Furniture/Fabric b. Flooring c. Counter Top*

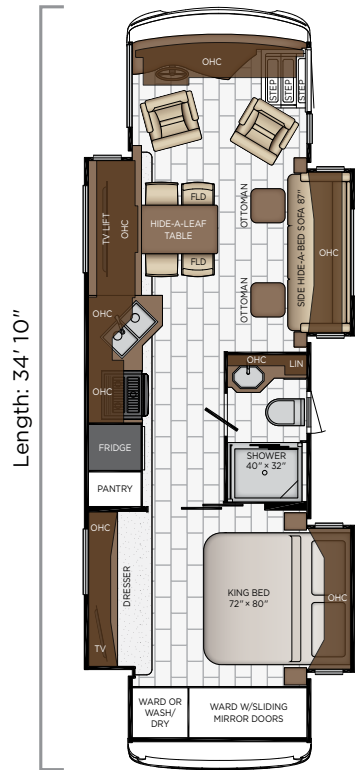


WINDWOOD INTERIOR

*a. Furniture/Fabric b. Flooring c. Counter Top*

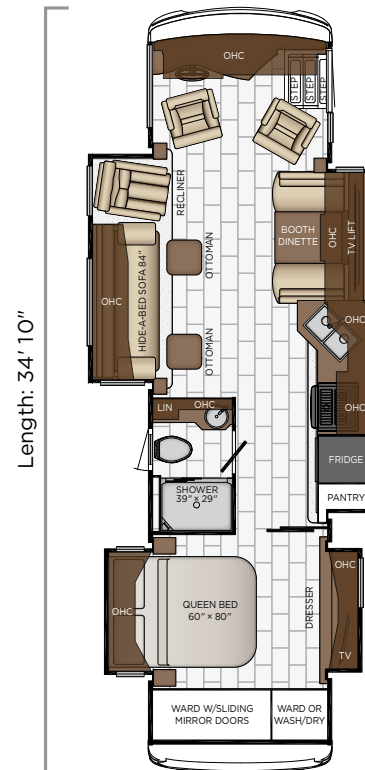


# Ventana



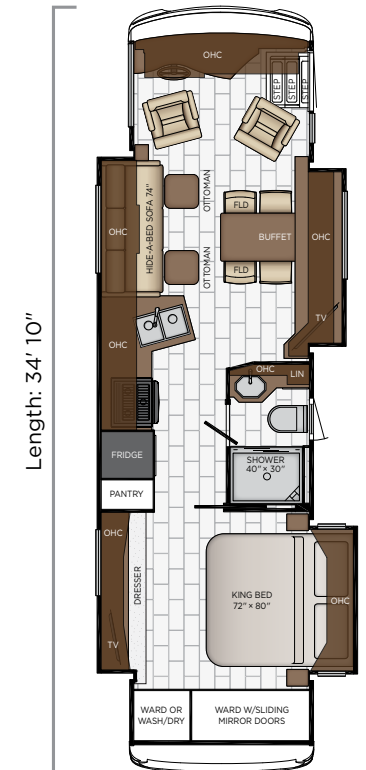
## 3407

Length	34'10"
Width	101.5"
App. Overall Height	12'10"
Interior Width	95.5"
Interior Height	83"
Grey Tank	65 gal.
Sewage Tank	45 gal.
Water Tank	105 gal.
Propane Tank	32 gal.
Furnace	35,000 btu



## 3412

Length	34'10"
Width	101.5"
App. Overall Height	12'10"
Interior Width	95.5"
Interior Height	83"
Grey Tank	65 gal.
Sewage Tank	45 gal.
Water Tank	105 gal.
Propane Tank	32 gal.
Furnace	35,000 btu



Length: 34' 10"

Length: 34' 10"

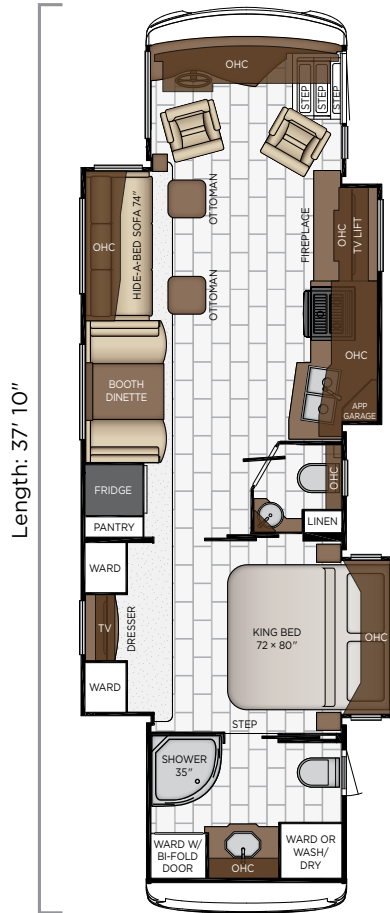
Length: 34' 10"



# Floor Plans

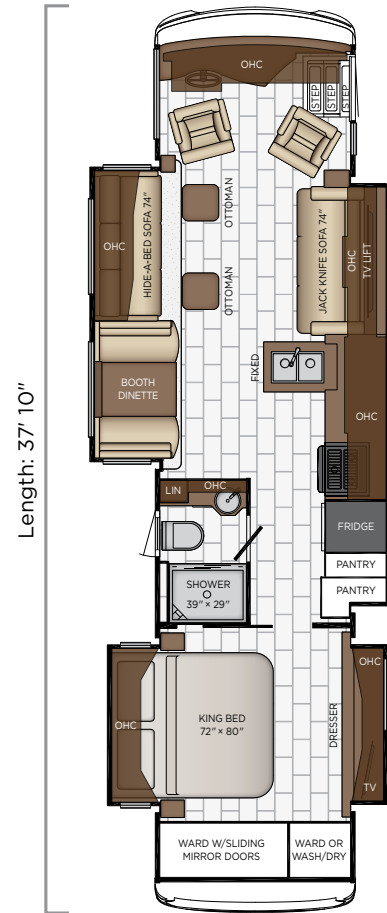
## 3426

Length	34'10"
Width	101.5"
App. Overall Height	12'10"
Interior Width	95.5"
Interior Height	83"
Grey Tank	65 gal.
Sewage Tank	45 gal.
Water Tank	105 gal.
Propane Tank	32 gal.
Furnace	35,000 btu



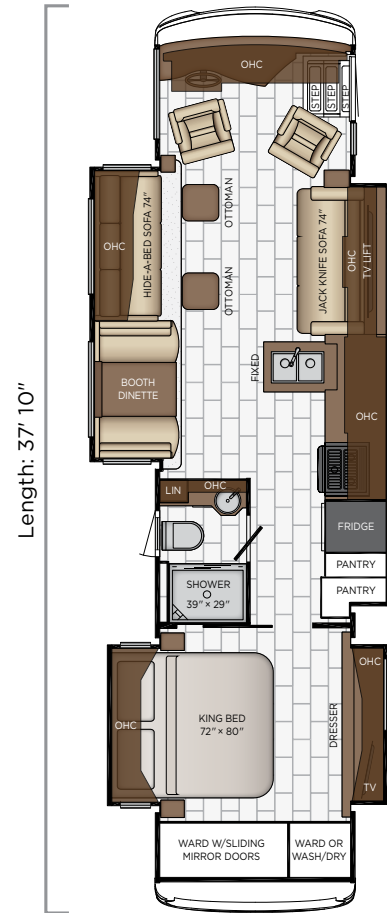
## 3709

Length	37'10"
Width	101.5"
App. Overall Height	12'10"
Interior Width	95.5"
Interior Height	83"
Grey Tank	65 gal.
Sewage Tank	45 gal.
Water Tank	105 gal.
Propane Tank	32 gal.
Furnace	54,000 btu



## 3717

Length	37'10"
Width	101.5"
App. Overall Height	12'10"
Interior Width	95.5"
Interior Height	83"
Grey Tank	65 gal.
Sewage Tank	45 gal.
Water Tank	105 gal.
Propane Tank	32 gal.
Furnace	54,000 btu





# Ventana



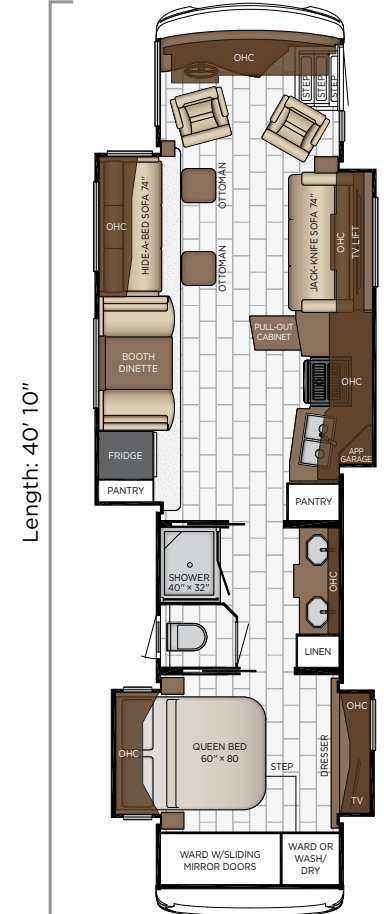
## 4002

Length	40'10"
Width	101.5"
App. Overall Height	12'11"
Interior Width	95.5"
Interior Height	83"
Grey Tank	65 gal.
Sewage Tank	45 gal.
Water Tank	105 gal.
Propane Tank	32 gal.
Furnace	54,000 btu



## 4037

Length	40'10"
Width	101.5"
App. Overall Height	12'11"
Interior Width	95.5"
Interior Height	83"
Grey Tank	65 gal.
Sewage Tank	45 gal.
Water Tank	105 gal.
Propane Tank	32 gal.
Furnace	54,000 btu



Length: 40' 10"

Length: 40' 10"

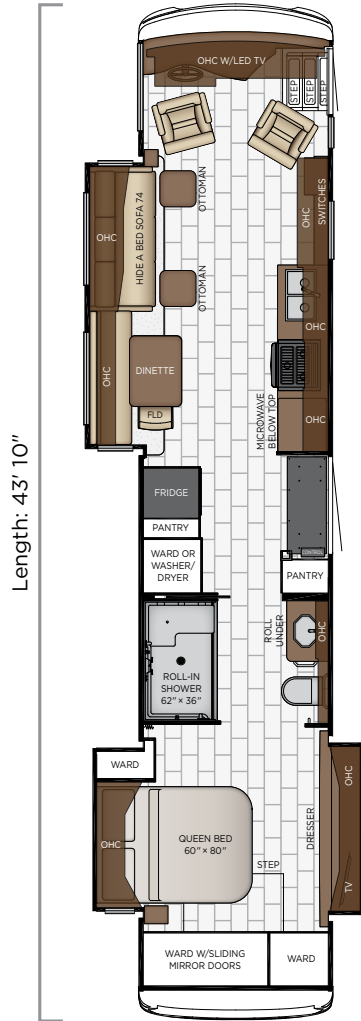
Length: 40' 10"



# Floor Plans

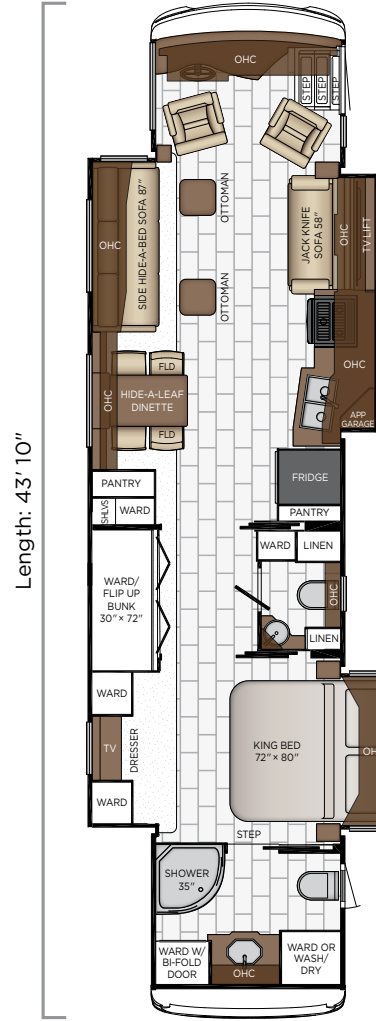
## 4054

Length	40'10"
Width	101.5"
App. Overall Height	12'11"
Interior Width	95.5"
Interior Height	83"
Grey Tank	65 gal.
Sewage Tank	45 gal.
Water Tank	105 gal.
Propane Tank	32 gal.
Furnace	54,000 btu



## 4311

Length	43'10"
Width	101.5"
App. Overall Height	12'11"
Interior Width	95.5"
Interior Height	83"
Grey Tank	65 gal.
Sewage Tank	45 gal.
Water Tank	105 gal.
Propane Tank	32 gal.
Furnace	50,000 btu



## 4326

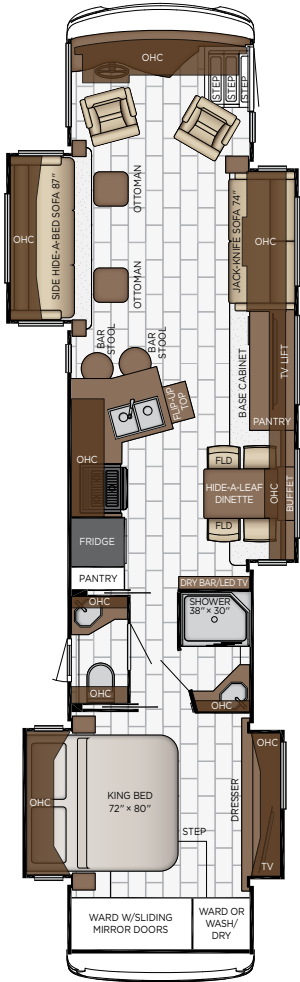
Length	43'10"
Width	101.5"
App. Overall Height	12'11"
Interior Width	95.5"
Interior Height	83"
Grey Tank	65 gal.
Sewage Tank	45 gal.
Water Tank	105 gal.
Propane Tank	32 gal.
Furnace	50,000 btu





# Ventana

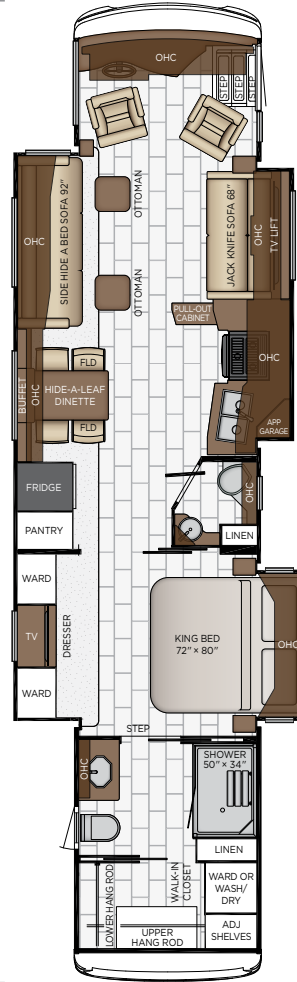
Length: 43' 10"



**4348**

Length	43'10"
Width	101.5"
App. Overall Height	12'11"
Interior Width	95.5"
Interior Height	83"
Grey Tank	65 gal.
Sewage Tank	45 gal.
Water Tank	105 gal.
Propane Tank	32 gal.
Furnace	50,000 btu

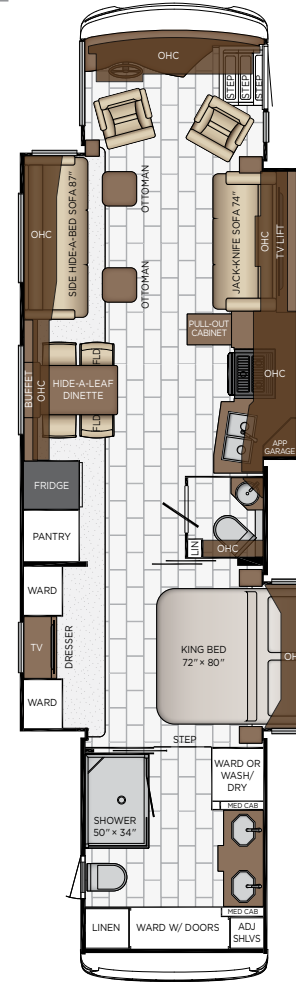
Length: 43' 10"



**4362**

Length	43'10"
Width	101.5"
App. Overall Height	12'11"
Interior Width	95.5"
Interior Height	83"
Grey Tank	65 gal.
Sewage Tank	45 gal.
Water Tank	105 gal.
Propane Tank	32 gal.
Furnace	50,000 btu

Length: 43' 10"



**4369**

Length	43'10"
Width	101.5"
App. Overall Height	12'11"
Interior Width	95.5"
Interior Height	83"
Grey Tank	65 gal.
Sewage Tank	45 gal.
Water Tank	105 gal.
Propane Tank	32 gal.
Furnace	50,000 btu







# Quality You Can Feel

Like a fine home, the 2020 Ventana is framed 16 inches on center, and is covered by a BriteTEK™ roof with an integrated gutter rail.

## FREIGHTLINER

FLOOR PLAN	ENGINE HP	AXLE RATIO	FUEL CAP.	WHEEL BASE	FRONT GAWR	REAR GAWR	TAG GAWR	GVWR	GCWR	APP. UVW	APP. NCC
3407	360	4.78	100 gal.	206	12400 lb.	23000 lb.	n/a	35400 lb.	45400 lb.	28900 lb.	6500 lb.
3412	360	4.78	100 gal.	206	12400 lb.	23000 lb.	n/a	35400 lb.	45400 lb.	29300 lb.	6100 lb.
3426	360	4.78	100 gal.	206	12400 lb.	23000 lb.	n/a	35400 lb.	45400 lb.	29000 lb.	6400 lb.
3709	360	4.78	100 gal.	242	13500 lb.	24000 lb.	n/a	37500 lb.	47500 lb.	30900 lb.	6600 lb.
3717	360	4.78	100 gal.	242	13500 lb.	24000 lb.	n/a	37500 lb.	47500 lb.	28900 lb.	7700 lb.
4002	400	4.78	100 gal.	245+TAG	14000 lb.	20000 lb.	10000 lb.	44000 lb.	59000 lb.	34600 lb.	9400 lb.
4037	400	4.78	100 gal.	245+TAG	14000 lb.	20000 lb.	10000 lb.	44000 lb.	59000 lb.	35800 lb.	8200 lb.
4054	400	4.78	100 gal.	245+TAG	14000 lb.	20000 lb.	10000 lb.	44000 lb.	59000 lb.	35600 lb.	8400 lb.
4311	400	4.78	100 gal.	281+TAG	14700 lb.	20000 lb.	10000 lb.	44700 lb.	59700 lb.	34700 lb.	10000 lb.
4326	400	4.78	100 gal.	281+TAG	14700 lb.	20000 lb.	10000 lb.	44700 lb.	59700 lb.	35300 lb.	9400 lb.
4348	400	4.78	100 gal.	281+TAG	14700 lb.	20000 lb.	10000 lb.	44700 lb.	59700 lb.	35200 lb.	9500 lb.
4362	400	4.78	100 gal.	281+TAG	14700 lb.	20000 lb.	10000 lb.	44700 lb.	59700 lb.	36700 lb.	8000 lb.
4369	400	4.78	100 gal.	281+TAG	14700 lb.	20000 lb.	10000 lb.	44700 lb.	59700 lb.	36700 lb.	8000 lb.

## SPARTAN

FLOOR PLAN	ENGINE HP	AXLE RATIO	FUEL CAP.	WHEEL BASE	FRONT GAWR	REAR GAWR	TAG GAWR	GVWR	GCWR	APP. UVW	APP. NCC
4002	400	4.88	100 gal.	245+TAG	14000 lb.	20000 lb.	10000 lb.	44000 lb.	59000 lb.	34700 lb.	9300 lb.
4037	400	4.88	100 gal.	245+TAG	14000 lb.	20000 lb.	10000 lb.	44000 lb.	59000 lb.	35900 lb.	8100 lb.
4054	400	4.88	100 gal.	245+TAG	14000 lb.	20000 lb.	10000 lb.	44000 lb.	59000 lb.	35600 lb.	8400 lb.
4311	400	4.88	100 gal.	281+TAG	14600 lb.	20000 lb.	10000 lb.	44600 lb.	59600 lb.	34800 lb.	9800 lb.
4326	400	4.88	100 gal.	281+TAG	14600 lb.	20000 lb.	10000 lb.	44600 lb.	59600 lb.	35500 lb.	9100 lb.
4348	400	4.88	100 gal.	281+TAG	14600 lb.	20000 lb.	10000 lb.	44600 lb.	59600 lb.	35100 lb.	9500 lb.
4362	400	4.88	100 gal.	281+TAG	14600 lb.	20000 lb.	10000 lb.	44600 lb.	59600 lb.	36800 lb.	7800 lb.
4369	400	4.88	100 gal.	281+TAG	14600 lb.	20000 lb.	10000 lb.	44600 lb.	59600 lb.	36800 lb.	7800 lb.

The content in our literature depicts and describes products that are subject to change. For the most recent images and information, please visit [NewmarCorp.com](http://NewmarCorp.com).

Lengths, heights, widths and dry weights are approximate. Weight will vary based on optional equipment added to the above base weight.

**GAWR:** Gross Axle Weight Rating is the maximum permissible weight for an axle.

**GVWR:** Gross Vehicle Weight Rating is the maximum permissible weight for a fully loaded motor coach.

**GCWR:** Gross Combination Weight Rating is the value specified by the manufacturer of the vehicle as the maximum allowable loaded weight of this motor coach and any towed trailer or towed vehicle.

**UVW:** Unloaded Vehicle Weight is the weight of this motor coach as built at the factory with full fuel, engine oil and coolants. Does not include cargo, fresh water, propane gas or dealer-installed accessories.

**NCC:** Net Carrying Capacity is the maximum weight of all occupants, including the driver, personal belongings, food, fresh water, waste water, propane gas, tools, tongue weight of towed vehicle, dealer-installed accessories, etc., that can be carried by the motor coach.

**Specifications supplied by the chassis manufacturer.**

**Ventana R-Values:**

Roof R-Value = 19

Sidewall R-Value = 11

Floor R-Value = 16

Basement R-Value = 4



# Features and Options



Ventana Dash

## EXTERIOR



### EXTERIOR FEATURES

- Full-Paint Masterpiece Finish™ with Diamond Shield Protection on Front Cap
- Convex Exterior Mirrors with Remote Control, Defrost and Turn Signals
- Chrome Exterior Mirrors
- Entrance Door with Automatic Step
- Rear Hitch for Towing Car
- Assist Handle at Entrance Door
- Mud Flaps
- Rear Protective Tow Guard with Stainless Steel Newmar Letters
- Undercoating
- Wheelchair Lift on 4311 Floor Plan
- Hydraulic Leveling Jacks with "Smart Level"
- Stainless Steel Exterior Trim Piece on Front Cap
- Painted Power Baggage Door Locks, Keyless Entrance Door with Touch Pad & Doorbell

### Hammock Backer

### OPTIONS

- Patio Hammock Package
- Large Storage Tray with Access from One Side
- Pass-Through Storage Tray with Access from Either Side
- Power Pass-Through Storage Tray with Access from Either Side on 4311
- Chrome Power Baggage Door Locks
- Flagpole Bracket
- Rear Ladder

### CONSTRUCTION FEATURES

- Gelcoated Fiberglass Exterior Sidewalls, Front and Rear Caps
- Aluminum-Frame Sidewalls & Roof Construction, 16" on Center
- 5/8" Foam Insulation Laminated in Sidewalls & Ceiling
- Polar Pak R19 Batten Insulation in Roof
- Fiberglass Roof and Integrated Gutter Rail
- Automatic Mechanical Lock Arms on Slideout Rooms - Scissor Style

### WINDOWS, AWNINGS & VENTS

- Frameless Double-Pane Tinted Safety Glass Windows
- Fan-Tastic® Vent with Rain Sensor in Kitchen and Bathroom
- Skylight Above Shower
- Girard G2000 Power Side Awning and Carefree Entrance Door Awning with Wind Sensor, Remote Control & LED lights
- Slideout Awning Covers
- One-Piece Tinted Windshield





Egress Door with Ladder System

#### OPTIONS

Carefree Window Awning Pkg of (3), 1-Bedroom, 1-Off Door Side Living Room, 1-Door Side Living Room

Carefree Window Awning Pkg of (4), 1-Bedroom, 1-Off Door Side Living Room, 2-Door Side Living Room

Kitchen Window\*

Screen Door Over Wheelchair Lift Area\*

Two Nova Side Awnings

Bunk Windows\*

## CHASSIS FEATURES

Freightliner 360Hp on 34'-37' Floor Plans

Freightliner® Tag Axle 400Hp on 40'-43' Floor Plans

Aluminum Wheels

Cruise Control

Comfort Drive™ Steering With Adjustable Control

Manual Tilt and Telescope Steering Column with VIP Smart Wheel

Recessed Fuel Fills with Crossover to Fill from Either Side

Back-Up Alarm

Antilock Braking System

Chassis Battery Disconnect

V-Ride Drive Axle Suspension on Freightliner Chassis

Glass Dash Instrument Panel

#### OPTIONS

Spartan® Tag Axle 400Hp on 40'-43' Floor Plans

## AIR CONDITIONING & HEATING

Two-15M Penguin™ Heat Pump Air Conditioners on 34'-40' Floor Plans

Three-15M Penguin Heat Pump Air Conditioner and Energy Management System\* - 43' Floor Plans only

Propane Gas Furnace with Ducted Heat on 34'-40' Floor Plans

Hydronic Zone Heating System with Continuous Hot Water on 43' Floor Plans

Dash Heater and Air Conditioner

Driver & Passenger Dash Overhead Ventilation System

Wall-Mounted Sensors for Heating and Air Conditioning

#### OPTIONS

Hydronic Zone Diesel Heat with Continuous Hot Water\*

## ELECTRICAL FEATURES

8.0 kW Cummins Onan® Diesel Quiet Series Generator

50 Amp Electrical Service with Flexible Cord with Automatic Transfer Switch

Four 6-Volt House Batteries on Pullout Tray

Battery Disconnect Switch for House Battery

10 Watt Solar Panel to Charge Chassis Battery

2000 Watt Pure Sine Inverter

12 Volt Auxiliary Receptacle on Dashboard

Emergency Engine Start Switch

Engine Block Heater

Exterior Security Light on Doorside

Mid-Ship Side Turn Signals

LED Lights Recessed in Ceiling and Underneath Overhead Cabinets

Manually Operated Hold-To-Run Slideout Switch

Cable TV Connection

Interior Courtesy Lights

Lights in Exterior Storage Compartments

USB Charger at Dinette & Bedroom Nightstand

Wireless Charging Mat Built into Dash

USB Outlet at Dash for Driver Use

Spare Fuses in Chassis and House Fuse Panels

Automatic Generator Start on Low Battery or Temperature Setting

Energy Management System

Multiplex Lighting Control System

Dimmable/Adjustable Aiming Reading Lights at Head of Bed

110 Volt Recept in Bed Overhead with Two Pass-Through Ports

110V/USB Outlet at Head of Each Bunk Area\*

Power Rewind Reel with 33' Cord\*

Power Rewind Reel with 50' Cord\*

#### OPTIONS

Solar Prep with Six-Gauge Wire Run from the Roof to the House Battery Compartment

Four Flexible 100 Watt Solar Panels on Roof

Transfer Switch with Surge Protector

## PLUMBING & BATH FEATURES

Demand Water System

Sewage Holding-Tank Rinse

Water Heater Bypass System

Dometic® 321 China Bowl Stool or Macerator Stool\*



Systems Monitor Panel

Sentrel Acrylic Shower Walls with Glass Door\*

Water Filter for Entire Unit

Exterior Shower

Auto Fill Feature for Fresh Water Tank

Power Water Hose Reel

Aqua Miser Shower System

#### OPTIONS

Fold-Down Shower Seat

Hot Water Line to Generator Area\*

## INTERIOR FEATURES

Designer Feature Ceiling

Tile Floor in Kitchen, Bathroom and Living Area

Floor Tile Extended into Bedroom Area

Carpeting on Slideout Floors

MCD Window Shades

MCD Power Shades at Windshield and Manual Shades on Driver/Passenger Side Windows

Dash Panel Color Coordinated ABS

Decorative Wall Art

Inlaid Six-Panel Design Interior Passage Doors

Interior Assist Handle at Main Entry Door

Power Stepwell Cover

Quilted Bedspread with Accent Pillows

Removable Transport Pads for Under Slideout Rollers

Wastebasket in Kitchen Base Under Sink

#### OPTIONS

Safe Located in Bedroom Wardrobe

MCD Power Window Shades with Remote Control on 4311

## CABINETS & FURNITURE

Bermuda Glazed Maple Hardwood Face Frame Cabinets with Mitered Designer Doors- Matte Finish

Concealed Hinges on Cabinet Doors

Polished Solid Surface Countertop in Kitchen with Under-Mounted Stainless Steel Sink and Sink Covers

Polished Solid Surface Countertop in Bathroom and Bedroom

Dinette with Power Adjusted Table, Bench Seat and Folding Chair on Wheelchair Accessible Floor Plan\*

Lifts on Bed Top

Passenger Seat Work Station





Pullout Pantry Shelves*
Drawers with Full Extension Guides
Flexsteel® Ultrafabric Sofa and Driver/Passenger Seats
Driver/Passenger Seats with Six-Way Power, Power Lumbar and Footrest
Plush Pillow Top Mattress
Extended Rotation Concealed Hinge for Washer/Dryer Cabinet Door
Appliance Garage in Kitchen*
Two Ottomans*
Mesh Cell Phone Holder at Each Bunk Bed*
Molded Silverware Divider Tray
Soft-Close Cabinet Drawers
Travel Latch on Pantry Doors
Villa Comfort Fit Convertible Booth Dinette
<b>OPTIONS</b>
Carmel Glazed Cherry Hardwood Face Frame Cabinets with Mitered Designer Doors-Opt. Matte Finish
Glacier Glazed Maple Hardwood Face Frame Cabinets with Mitered Designer Doors-Matte Finish
Newport Glazed Maple Hardwood Face Frame Cabinets with Mitered Designer Doors-Matte Finish
Queen Bed
Comfort Booth Dinette*
Comfort Booth Dinette with Steel Frame and Seatbelt*
Buffet Dinette
Buffet Dinette with Freestanding Table
Buffet Dinette, Two Fixed/Two Folding Chairs on 4311
Buffet/Dinette with Rollaway Table, Two Fixed/Two Folding Chairs
Buffet Dinette Table and Four Folding Chairs
Sleep Number R5 Radius Corner Air Mattress
Combination Desk with Buffet Table, Two Fixed/Two Folding Chairs
Combination Desk/Dinette with Freestanding Hidden Leaf Table, Two Fixed/Two Folding Chairs
Combination Desk with Buffet Dinette, Two Fixed/Two Folding Chairs
Combination Desk/Dinette with Rollaway Table, Two Fixed/Two Folding Chairs
Recliner with Lampstand
One Recliner, Fireplace, Televator, Reading Lights-Off Door Side, Fold-N-Tumble
Two Recliners, with Reading Lights
87" Sofa/Bunk*
87" Sofa/Bunk with End Table*
Power Incline Head of Bed with Sleep Number R5 Air Mattress*
Power Incline Retracting Bed Base with Sleep Number R5 Air Mattress*
Flexsteel® Euro Booth Dinette with 1-6" Table Leaf

Bunk Beds to Convert to Wardrobe
Euro Booth Dinette on 3426
Euro Booth Dinette with Extra Leaves, Folding Table Leg, & Two Folding Chairs
Full Height Bed Base on 4311
Villa Comfort Fit Convertible Booth Dinette
Powered 74" Theater Seating
Powered 87" Theater Seating

**APPLIANCES**

Convection Stainless Steel Microwave with Three-Burner Recessed Gas Cooktop
Air Horns
Norcold® 10 Cf. Refrigerator with Brushed Aluminum Refrigerator Front
10 gal. Gas/Electric Water Heater with Direct-Spark Ignition on 34'-40' Floor Plans
Prep for Two-Piece Washer/Dryer
Flush Gas Cooktop Cover of Matching Countertop Material
Fireplace in Living Area*
<b>OPTIONS</b>
30" Convection Microwave in Kitchen Overhead with a Drawer Below Cooktop on 4311
Norcold® 12 Cf. Four-Door Refrigerator with Icemaker
Norcold® 12 Cf. Four-Door Refrigerator with Icemaker with Heated Water Line
Icemaker Added to Standard Norcold® Refrigerator
Icemaker Added to Standard Norcold® Refrigerator with Heated Water Line
Whirlpool® 11 Cf. Refrigerator with Two Extra Batteries, 22 gal. Propane Tank and Icemaker
Whirlpool® 11 Cf. Refrigerator with Two Extra Batteries and 22 gal. Propane Tank
Whirlpool® 19.7 Refrigerator with Two Extra Batteries and 22 gal. Propane Tank
Splendide® Two-Piece Stacked Washer/Dryer
All Electric, Flush Mount Induction Cooktop, Whirlpool 19.7 Refrigerator, 4 Extra Batteries, 2800 Inverter, Hydronic Heat
All Electric, Flush Mount Induction Cooktop, Whirlpool 19.7 Refrigerator, 4 Extra Batteries, 2800 Inverter
Central Vacuum with Tool Kit
110 Volt Heat Pads for Holding Tanks* (Not Available on 43' units)
Dishwasher in a Drawer with Stainless Steel Front
Electrical Prep for Freezer without Tray

**AUDIO, VIDEO & ACCESSORIES**

Samsung LED 4K TV and Blu-ray Player in Living and Bedroom Areas* (TV Sizes Vary Per Floor Plan)
Samsung 50" LED 4K TV on Televator in Living Area*
Dash Radio/CD Player with Harman/JBL 180 Watt Sound System and Subwoofer



Bose Solo 5 Soundbar Sound System
Bluetooth Microphone for Sony Dash Radio
Two Blu-ray Disc Players
Rearview Color Monitor System with Audio
Side-View Cameras Displayed onto Rearview Monitor Screen
Winegard Digital TV Antenna
Satellite Dish Prep on Roof
Two Bedroom Radio Speakers
TV Jack and 110 Volt Recept in Door Side Exterior Storage Compartment
High Definition Component Wiring
10 Bc Fire Extinguisher, Smoke Detectors, Propane and Carbon Monoxide Detector
<b>OPTIONS</b>
Sirius® Satellite Radio Capability (Does not include monthly subscription)
Samsung 43" 4K LED TV in Front Overhead
50" Televator TV with Fireplace on 4311 Floor Plan
Exterior Entertainment Center in Sidewall with Samsung 43" 4K LED TV and Soundbar
Exterior Entertainment Center in Storage Compartment with Samsung 43" LED TV and Soundbar
Omniview NS360 Camera System*
Prep for Ground Tripod Satellite Dish on Off Door Side with A/B Switch
Winegard Automatic Dome Satellite
Winegard Cellular In Motion WiFi
Winegard In Motion Dome Satellite
Winegard Automatic Open Face Satellite
Winegard Automatic Open Face SWM Satellite Dish
Winegard Rayzar Automatic Digital TV Antenna
WiFiRanger Sky4 Pack Router
WiFiRanger SkyPro LTE Cellular Router
Universal Remote Control
Universal Toll Module
Xite Dash Radio, 6" Monitor with Rand McNally Navigation
Two-19" Skyworth TV/DVD Player at Each Bunk*

**\*Check with dealership on floor plan availability.**

**The content in our literature depicts and describes products that are subject to change. For the most recent images and information, please visit [NewmarCorp.com](http://NewmarCorp.com).**



# The Newmar Customer Experience

*The Newmar difference goes beyond our industry-leading motor coaches to deliver you with an unrivaled ownership experience.*



## QUALITY FROM THE START

Every Newmar is crafted one at a time by folks who have spent an average of eight years building them. And each coach we assemble must undergo more than 1,000 tests and checks before ever leaving our factory.



## CAREFULLY SELECTED DEALERS

We view our dealership network in terms of quality, not quantity. Each of our dealers acts as a partner in our shared mission to exceed your highest of expectations, for an ownership experience that's second to none from day one.



## EVERYTHING IN ONE PLACE

As a Newmar owner, you'll find resources specific to your coach through Newgle, an easy-to-use knowledge base that houses everything from user guides to technical support documents.



## FRIENDS FOR LIFE

Meet fellow owners through the Newmar Kountry Klub, a top social club for RV travelers that hosts rallies and other special events throughout the U.S. and Canada.



## SEAMLESS SERVICE

When you join the Newmar family, we pair you with a dedicated service specialist with expert knowledge of your exact coach. Available 24/7, our service specialists guarantee dealer warranty authorizations within four business hours and ship all in-stock parts the same day, free of charge.



## ROCK-SOLID PROTECTION

All models include a one-year/unlimited mileage limited warranty and a five-year, non-transferable structural warranty that covers your coach's superstructure in the event it fails to perform.

**Ask your Newmar dealer for more details.**





## A. ROOF

---

Fiberglass Roof

Batten Insulation

A/C Ducting

16" on Center Aluminum  
Rafter Framing

Kraft Paper Vapor Barrier

5/8" Bead Foam

3/16" Panel

Padded Vinyl Overlay

## B. SIDEWALL

---

Interior Wall Panel

5/8" Bead Foam

Kraft Paper Vapor Barrier

Batten Insulation

Composite One-Piece

Gelcoat Exterior Sidewall

Aluminum Framing

## C. FLOOR

---

Carpet/Tile

Carpet Padding

5/8" Floor Decking

Batten Insulation

16" on Center Wood Framing

Polyethylene Moisture Barrier

## D. EXTERIOR

---

15M Penguin™ Heat Pump

Central Air Conditioner

One-Piece Bonded Windshield

Coated Aluminum Wheels

Frameless, Double-Pane,  
Tinted Safety Glass Windows

Side-Hinged Baggage Doors  
with Optional Pull-Out Tray

# Our Partners

*Newmar Quality Begins With The Company We Keep*

*You deserve class-leading performance from names you can trust. That's why we only work with suppliers dedicated to providing our customers with unrivaled quality, comfort, and support.*



We create chemistry

## BASF

The Coatings division of BASF is a global expert in the development and production of innovative and sustainable OEM and refinish coatings that deliver solutions beyond your imagination.



## INDUSTRIAL FINISHES

Industrial Finishes has supported RV manufacturers for over four decades. The Industrial Finishes paint process delivers uncompromising quality, providing your coach with a true "Masterpiece" finish.



Driven By You

## FREIGHTLINER CUSTOM CHASSIS

Freightliner Custom Chassis Corp. (FCCC) is renowned for delivering the industry's best ownership experience through exceptional 24/7 factory-direct support, exceptional ride and handling and developing high-performance innovations such as DRIVETECH. The only RV driving system that prioritizes safety and automotive luxury by putting every command at your fingertips.



## RIVERPARK

At RiverPark, we proudly represent the leading brands in consumer electronics—brands you know and trust to provide exceptional quality, innovative technology, and cutting-edge features. Newmar features Samsung's incredible 4K TVs, Xite Infotainment systems featuring Rand McNally, Bose soundbars, and JBL and Infinity premium audio. Step into a 2020 Newmar motorhome and experience dazzling audio and video performance throughout the coach.



FLEXSTEEL®  
RECREATION

## FLEXSTEEL RECREATION

Flexsteel Recreation offers innovative furniture designed for a life that rarely sits still. Comfortable and space-saving, Flexsteel furniture ensures your RV is always ready for dining, sleeping, or hosting guests.



## SPARTAN MOTORS

Spartan Motors is an American company with over 30 years of experience designing and manufacturing the premier motorhome chassis, which provides superior performance, exceptional safety ratings, and industry-leading technology.





# Our People Make the Difference

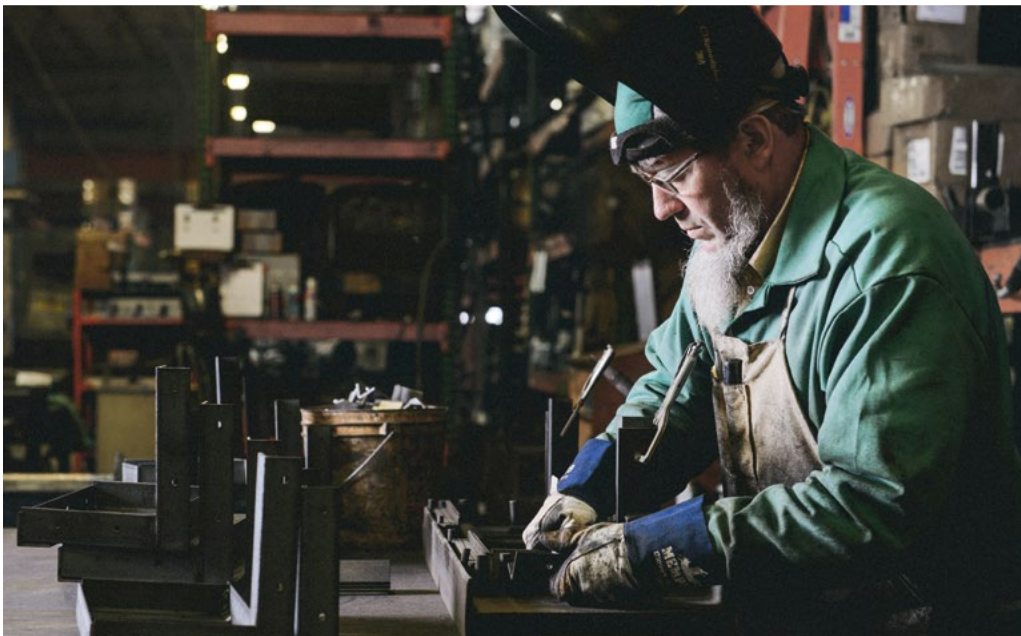
Newmar was founded in 1968 for one simple reason:  
to build a better RV.

Since then, we've focused our efforts and energy on creating residential-quality "homes on wheels," complete with handmade cabinetry and designer décors.

And every Newmar is handcrafted one at a time by men and women who have spent an average of eight years assembling them, resulting in superior-quality coaches that fully surpass their mass-produced competition.

Here, we don't just take the responsibility of designing, engineering, and constructing your motorhome seriously, we take it personally. Because in the end, our goal is not to win your trust, but earn it. Not once, but every single time you hit the road.

Join us, and discover the Newmar difference for yourself.



When You Know the Difference.



Newmar Corporation | 355 N Delaware St | PO Box 30 | Nappanee, IN 46550-0030 | 574-773-7791 | Fax 574-773-2895

[NewmarCorp.com](http://NewmarCorp.com)